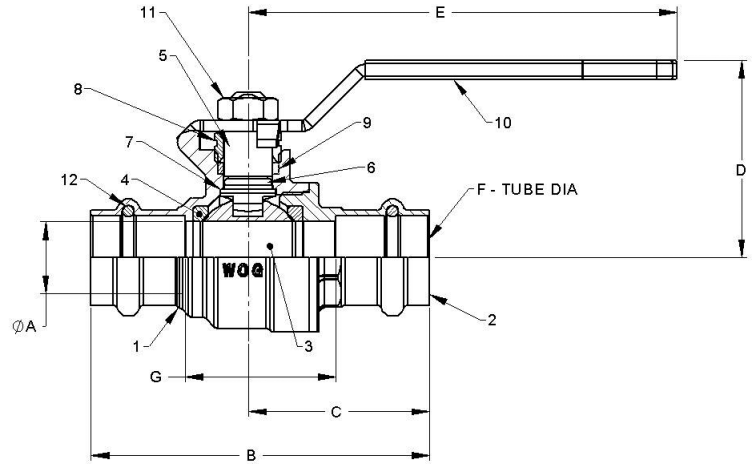




**Brass Ball Valve
Two-Piece, Full Port
Press X Press Ends
200 PSIG @ 250° F
Blow-Out Proof Stem**

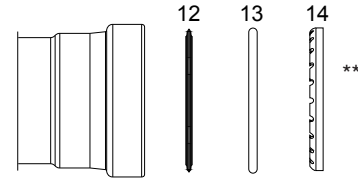
BA-480S* 1/2" - 3"

MATERIALS LIST			
ITEM	PART	MATERIAL	ASTM/SPEC
1	Body	Brass, Forged	B283
2	Tailpiece	Brass, Forged	B283
3	Ball	316 SS	B283
4	Ball Seat	PTFE	Commercial
5	Stem	316 SS	A276
6	Stem O-Ring	Buna-N	D2000
7	Thrust Washer	PTFE	Commercial
8	Gland Nut	Brass	B124
9	Packing	PTFE	Commercial
10	Handle	Zinc Plated Steel	Commercial
11	Handle Nut	Zinc Plated Steel	Commercial
12**	Backing Ring	Plastic	Commercial
13**	Tube O-Ring	EPDM	Commercial
14**	Gripping Ring	Stainless Steel	Commercial



*Ultra Press Valves are designed and qualified for use in copper tubing systems only, Types K, L, & M per ASTM B88. For Installation Instructions please see engineering section on website.

**2 1/2" & 3" only (Not NSF Approved). 2 1/2" & 3" Requires XLC Installation.



DIMENSIONS							
Size		1/2" DN15	3/4" DN20	1" DN25	1-1/4" DN32	1-1/2" DN40	2" DN50
A PORT DIA	inch	0.51	0.76	0.98	1.26	1.50	2.00
	mm	13	19	25	32	38	51
B	inch	3.15	3.70	4.29	4.84	5.91	7.43
	mm	80	94	109	123	150	188.72
C	inch	1.41	1.66	1.80	2.10	2.50	3.49
	mm	36	42	46	53	64	88.65
D	inch	1.46	1.93	2.10	2.33	2.52	2.96
	mm	37	49	53	59	64	75
E	inch	3.14	4.35	4.35	5.00	5.00	6.90
	mm	80	110	110	127	127	175
F TUBE DIA	inch	0.63	0.88	1.13	1.38	1.63	2.13
	mm	15	20	25	32	40	50
G	inch	1.50	1.73	2.32	2.79	3.07	3.75
	mm	38	44	59	71	78	95
Cv		18	40	72	112	161	287
TORQUE	in. lb	19	58	69	89	124	210
	N.m	2.1	6.5	7.8	10	14	24
WEIGHT	lbs.	0.41	0.80	1.15	1.66	2.47	4.90
	grams	186	363	521	753	1120	2222

Rev. 2



The information presented on this sheet is correct at the time of publication. Hammond Valve reserves the right to change design, and/or material specifications without notice. For the Installation, Operation and Maintenance Manual (IOM) see the engineering section on our website. For the most current information access www.hammondvalve.com
Hammond Valve is a registered trade mark of Milwaukee Valve Company.

