



Bronze Ball Valve For Potable Water

Three-Piece • Full-Port

Blow-Out Proof Stem

600 PSIG WOG

Soldered Ends

UP8614/8613 1/2"-2"

FED. SPEC. WW-V-35C, II, BZ,3

Dimensions and workmanship conform to MSS SP-110

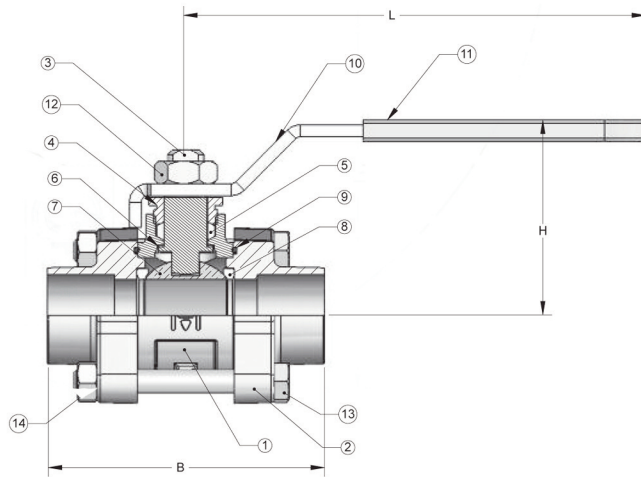
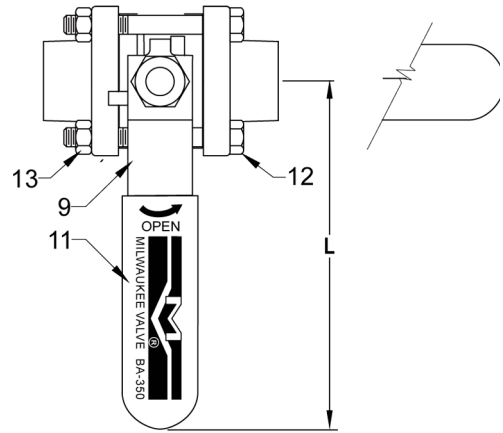
Designed in accordance with the requirements of California AB 1953,
Vermont S 152 and Senate Bill S3874

MATERIALS LIST

ITEM	PART	MATERIALS	ASTM SPEC.
1	Body	Cast Bronze	B584 C89833
2	End Cap	Cast Bronze	B584 C89833
3	Stem	Brass	UNSC 89833
4	Packing Nut	316 Stainless Steel (1)	A276
5	Packing	Brass	B16
6	Packing	PTFE	
7	Thrust Washer	RPTFE, 25% Glass Reinforced	
8	Ball	Brass w/Hard Chrome Plating	B283 C69300
9	Seat	316 Stainless Steel (1)	A276
10	Seat	RPTFE, 15% Glass Filled	
11	O- Ring	Viton	Commercial
12	Handle	Steel w/ Zinc Plating	B633
13	Handle Grip	Steel w/ Zinc Plating	Commercial
14	Handle Nut	Vinyl	
		Steel w/ Zinc Plating	Commercial
		Steel w/ Zinc Plating	Commercial
		Steel w/ Zinc Plating	Commercial

(1) Ball and stem are stainless for UP8613.

Rev.1

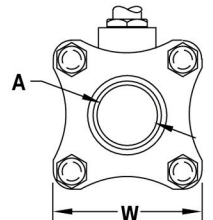


DIMENSIONS

	UNITS	1/2"	3/4"	1"	1 1/4"	1 1/2"	2"
		DN15	DN20	DN25	DN32	DN40	DN50
A	INCHES	0.50	0.75	1	1.25	1.50	2
	mm	13	19	25	32	38	51
B	INCHES	2.80	3.44	3.87	4.75	5.25	6.10
	mm	72	88	94	121	134	153
H	INCHES	1.95	2.26	2.44	2.80	3.12	3.58
	mm	50	57	62	71	79	91
L	INCHES	3.88	4.75	4.75	6.50	7.38	7.38
	mm	99	121	121	165	187	187
W	INCHES	1.91	2.19	2.46	2.98	2.98	4
	mm	49	56	62	76	76	102
F	THREAD	1/2"	3/4"	1"	1 1/4"	1 1/2"	2"
	SIZE	NPT	NPT	NPT	NPT	NPT	NPT
Cv		17	31	60	110	185	360

* 3" is Standard Port

Hammond Valve
16550 W. Stratton Drive
New Berlin, WI 53151
Phone: 262-432-2702
Fax: 262-432-2703



Note: Lead free refers to the wetted surface of the pipe, fittings and fixtures in potable water systems that have a weighted average lead content 0.25%. Source: California Health and Safety code (116875).

The information presented on this sheet is correct at the time of publication. Hammond Valve reserves the right to change design, and/or material specifications without notice. For the Installation, Operation and Maintenance Manual (IOM) see the engineering section on our website. For the most current information access www.hammondvalve.com
Hammond Valve is a registered trade mark of Milwaukee Valve Company.

