



# CHECK UP947

## BRONZE SPRING CHECK VALVE\*

Designed in accordance with the requirements of California AB 1953 and Vermont S 152



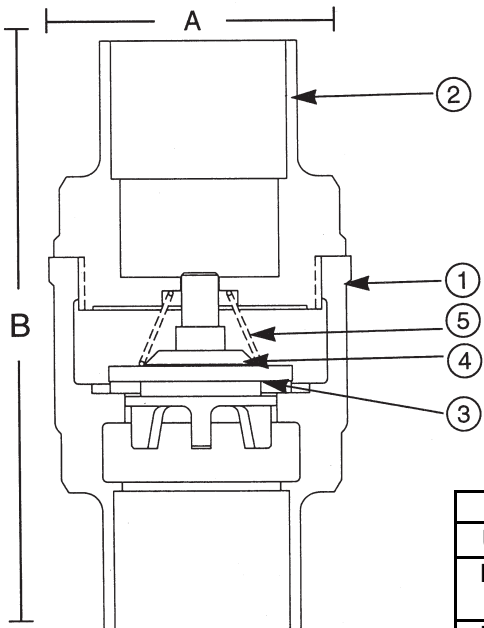
WQA tested and Certified against WQA ORD0902 for California "lead free" compliance.

### RATING

- 250 PSI NON-SHOCK COLD WATER, OIL OR GAS

### FEATURES

- BRONZE BODY
- SOLDERED ENDS
- BRONZE SPRING
- BUNA DISC RING
- BRONZE DISC HOLDER
- 100% FACTORY TESTED
- SILENT CLOSING (minimizes water hammer)



### MATERIAL LIST

NO.	PART	MATERIAL	SPECIFICATION
1	Body	Cast Bronze	ASTM B584 C89833
2	Tail Piece	Cast Bronze	ASTM B584 C89833
3	Disc	PTFE	
4	Disc Holder	Cast Bronze	ASTM B584 C89833
5	Spring	Bronze	ASTM B103 C52100

### DIMENSIONS - INCHES / MILLIMETERS

UNITS	SIZE	A	B	C	Weight	C <sub>v</sub>
Inches	3/8	1.22	2.16	1.97		2.5
mm	9.53	30.96	54.76	50.01		
Inches	1/2	1.22	2.41	2.09	0.45	4.1
mm	12.70	30.96	61.11	53.19		
Inches	3/4	1.50	3.81	2.31	0.62	7.6
mm	19.05	38.10	96.85	58.75		
Inches	1	1.91	3.53	2.66	0.97	13.0
mm	25.40	48.41	89.69	67.46		
Inches	1 1/4	2.16	4.88	3.09	1.42	23.0
mm	31.75	54.76	123.83	78.59		
Inches	1 1/2	2.59	4.22	3.31	1.84	31.0
mm	38.10	65.89	107.16	84.15		
Inches	2	3.13	5.09	3.78	2.75	54.0
mm	50.80	79.38	129.39	96.04		

Hammond Valve  
16550 W. Stratton Drive  
New Berlin, WI 53151  
Phone: 262-432-2702  
Fax: 262-432-2703

\* International VALVE

Rev. 4

**Note:** Lead free refers to the wetted surface of the pipe, fittings and fixtures in potable water systems that have a weighted average lead content 0.25%. Source: California Health and Safety Code (116875).

The information presented on this sheet is correct at the time of publication. Hammond Valve reserves the right to change design, and/or material specifications without notice. For the Installation, Operation and Maintenance Manual (IOM) see the engineering section on our website. For the most current information access [www.hammondvalve.com](http://www.hammondvalve.com)  
Hammond Valve is a registered trade mark of Milwaukee Valve Company.

