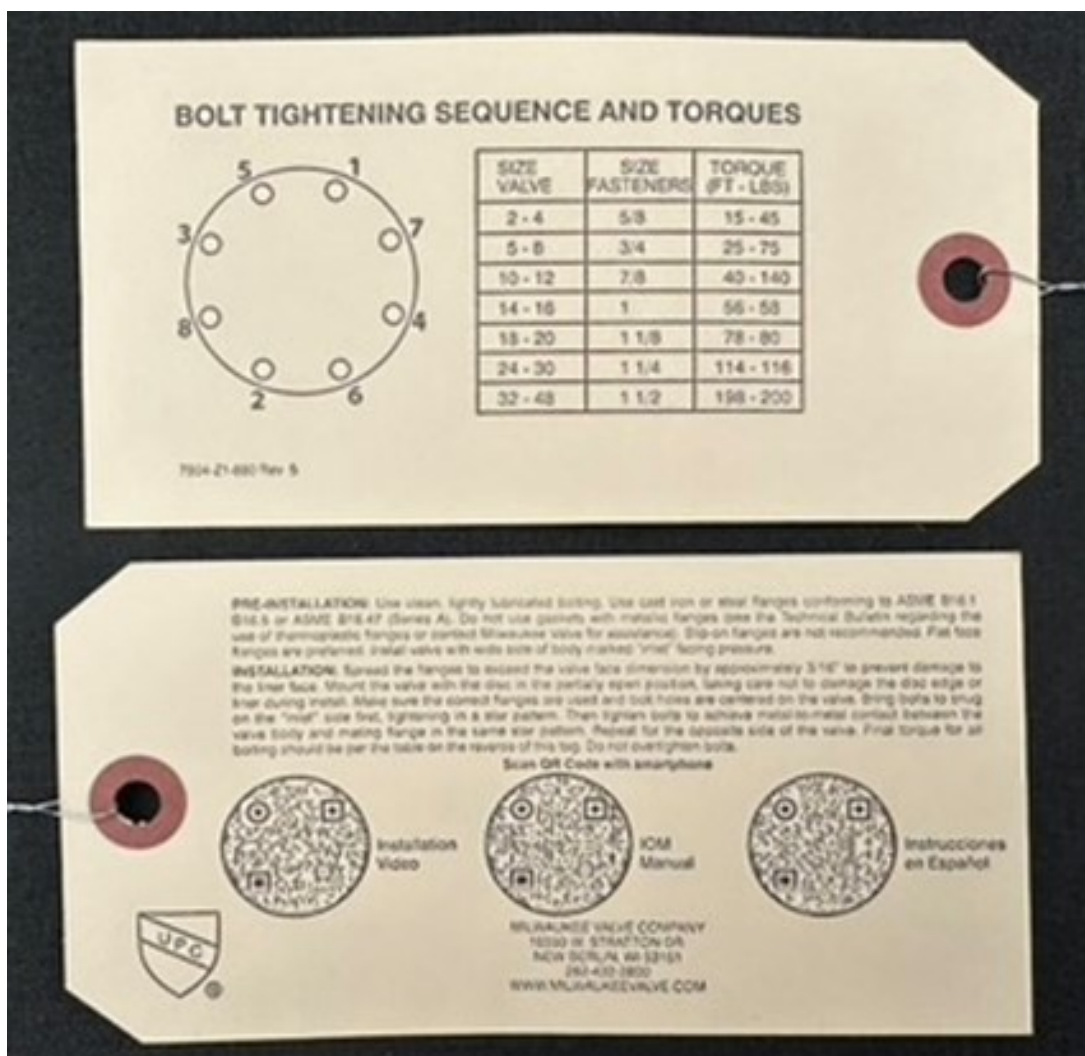


February 28, 2024

## Just Hanging Around, Handling Questions

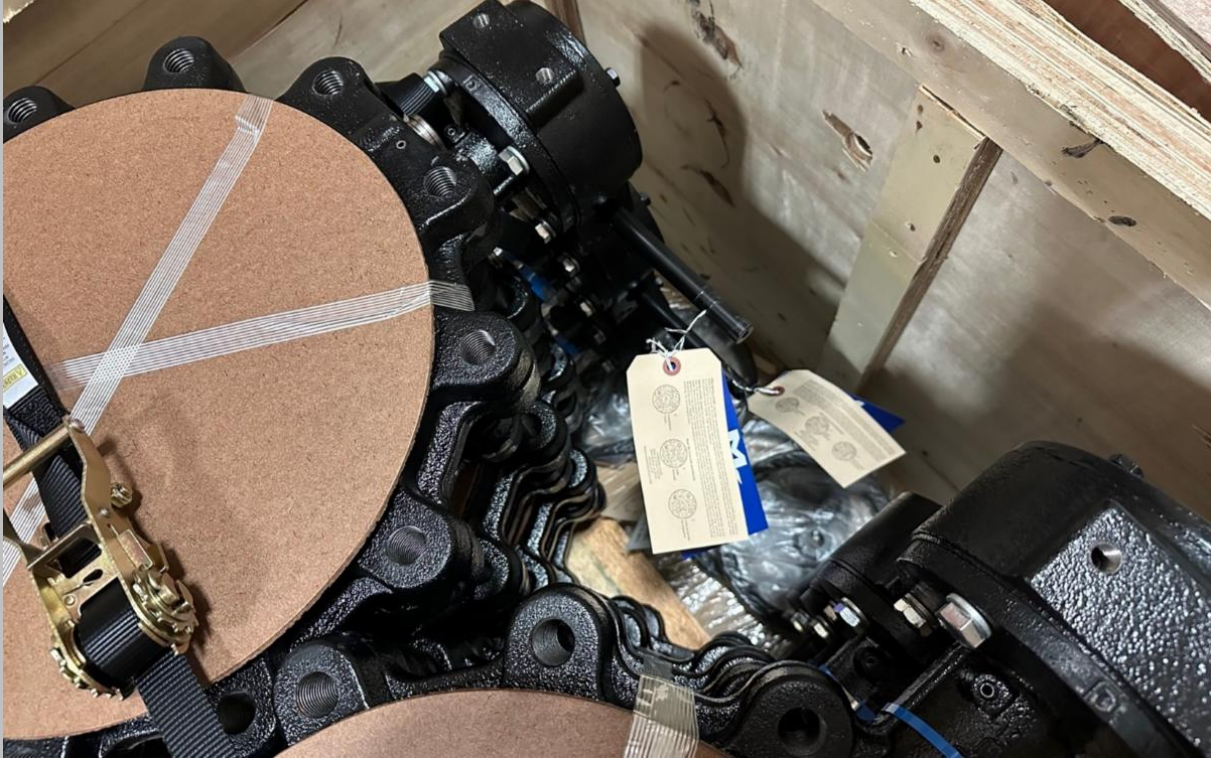
**Did You Know...** To assist installers of Milwaukee Valve resilient-seat iron butterfly valves, installation tags have been created. The tags include three QR codes, and each code can be scanned using a smartphone camera. Once scanned, the code will take the installer directly to an appropriate document or video.



On these hang tags, the QR codes link to the following:

- 1) A [link](#) to the **installation video** for Rubber-Lined Butterfly Valves
- 2) A [link](#) to the **IOM manual**
- 3) A [link](#) to text **instructions in Spanish**.

These tags are affixed to every valve we ship. In the case of gear-operated lug-style valves, the tags are wired securely to the valve, so the installer must physically remove the tag before installation. (And hopefully read it before tossing it in the trash.)



For more information on resilient-seated iron butterfly valves, visit [www.MilwaukeeValve.com](http://www.MilwaukeeValve.com) or contact your Milwaukee Valve customer service rep today. A complete listing, by territory, can be searched at our website, at [www.MilwaukeeValve.com/Find-Sales-Rep/](http://www.MilwaukeeValve.com/Find-Sales-Rep/).



**MILWAUKEE VALVE**

[www.milwaukeevalve.com](http://www.milwaukeevalve.com)  
262.432.2700



**HAMMOND VALVE**

[www.hammondvalve.com](http://www.hammondvalve.com)  
262.432.2702

16550 West Stratton Drive, New Berlin, WI 53151

