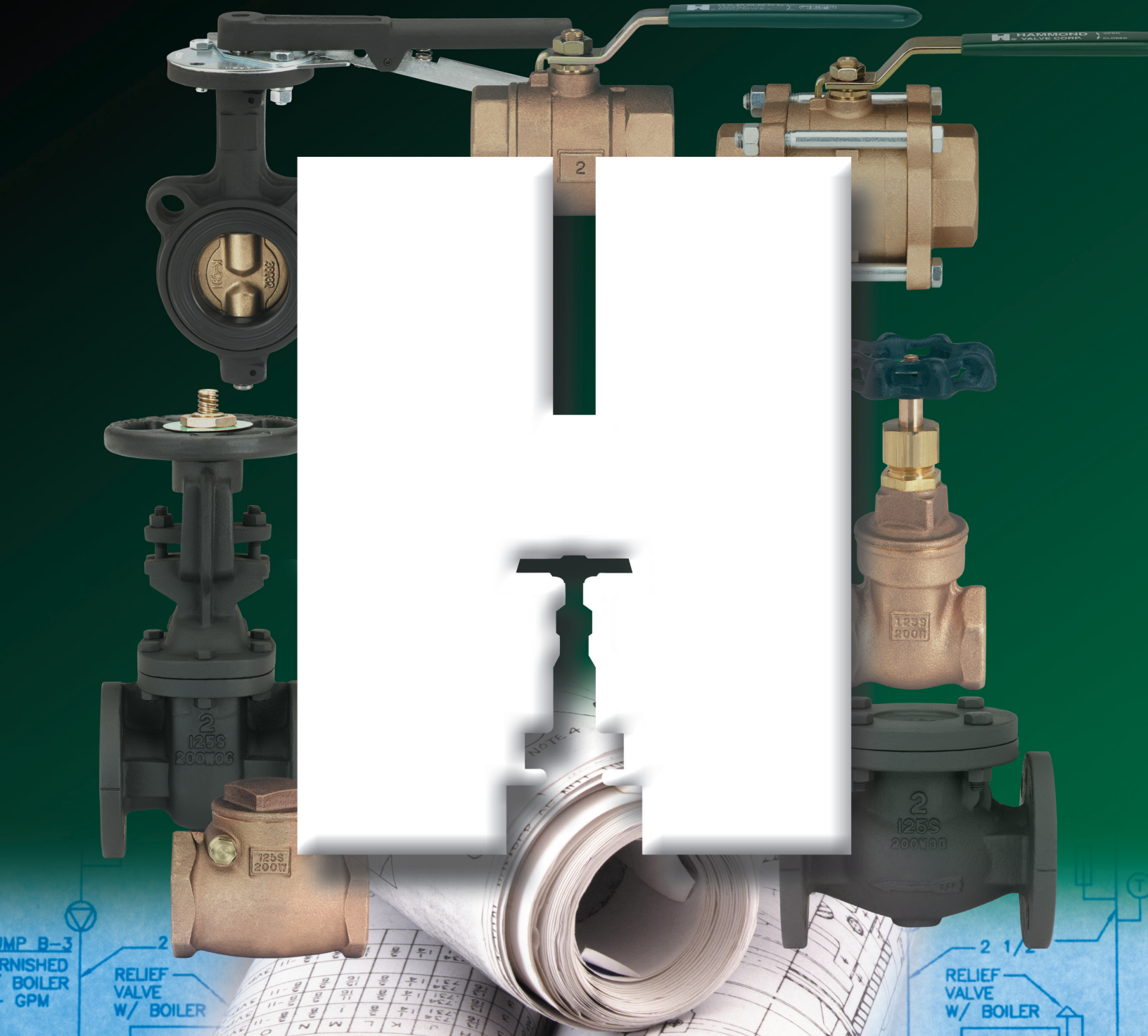


CONDENSED CATALOG



QUALITY YOU CAN BUILD ON


HAMMONDVALVE®
BETTER AT EVERY TURN



Pressed for time?

JUST PRESS, CRIMP AND TRIPLE YOUR PRODUCTIVITY¹.

Reduce installation time up to 68% with Hammonds's extensive new line of UltraPress® press-connection valves. Perfect for potable water, HVAC and inert gas systems, UltraPress valves quickly install without brazing, soldering or special tools. With no open flame required, water service connections can be made wet or dry for faster, easier repairs. Plus, UltraPress eliminates heat-installation costs like solder, flux, propane torches, oxygen/gas bottles and "hot" work permits.

Available in fully annealed brass, bronze and lead-free² UltraPure® alloys—in ball, gate, globe and check styles—you're sure to find the valves you need. Accessories, too, like extension, INSULATOR/MS® and lockout handles.

See the full line of UltraPress products, additional features, full specifications, and a downloadable brochure at www.UltraPressValves.com.

¹ Estimate based on MCAA's WebLEM (Web-based Labor Estimating Manual).

² Lead content less than 0.25%, defined as lead-free by US Senate Bill S.3874.

© 2016, Milwaukee Valve Company.

ULTRAPRESS
BY HAMMOND VALVE



16550 West Stratton Drive • New Berlin, WI 53151
262.432.2700 • Fax 262.432.2701
www.HammondValve.com • www.UltraPressValves.com



CONTENTS

BALL VALVES **PAGE 4-7**

BUTTERFLY VALVES **PAGE 8-9**

- 5000 Series Commercial Construction
- 6000 Series Standard Industrial
- UltraPure® Commercial Construction
- 6100/6200-HP Series High-Pressure
- HP Series High-Performance
- Grooved

ACTUATION **PAGE 10**

BRONZE VALVES **PAGE 11-15**

- Gate, Page 11-12
- Globe & Angle, Page 13
- Check, Page 14-15

FIRE PROTECTION VALVES **PAGE 15**

CAST STEEL VALVES **PAGE 16**

- Gate
- Globe
- Check

IRON VALVES **PAGE 17**

- Gate & Clip-Gate
- Globe
- Check Valves

PLUMBING VALVES **PAGE 18-21**

ULTRAPURE® LEAD-FREE VALVES FOR POTABLE WATER SERVICE .. **PAGE 22-25**

ENGINEERING & DESIGN CAPABILITIES **PAGE 26**

Rev. 05/24

250 WOG

The information presented on this sheet is correct at time of publication. Hammond Valve reserves the right to change design and/or materials without notice. For our Installation, Operation and Maintenance Manual and the most current product information go to www.hammondvalve.com. Hammond Valve is a registered trademark of Milwaukee Valve. ⚠ State of California Prop 65 WARNING: Cancer and Reproductive Harm. For more information visit www.p65warnings.ca.gov.

BALL VALVES



8501-16



8501 P2



8501H

Options/Accessories

8501/8503

8511/8513

Insulator Handle with Memory

Stop (16)

Oval Handle (04)

Stainless Steel Handle (08)

Extension Handle with Memory

Stop (09)

Extension Handle (06)

Memory Stop (02)

Tee Handle (03)

Chain Lever (12)

Locking Handle (07)

2-PIECE BRONZE

Standard Port

8501 / 8503

600 WOG 150 SWP, MSS SP-110, Threaded, 8503 with Stainless Steel Ball and Stem 1/4" thru 3"

8501E

125 psig, MSS SP-110, Latch Lock Handle, Threaded with Exhaust Port 1/4" thru 2"

8501M

600 WOG 150 SWP, MSS SP-110, Male x Female 1/4" thru 2"

8501 P2 / 8503 P2

200 psig @ 250°F, MSS SP-110, Press X Press, 8503 P2 with Stainless Steel Ball and Stem 1/2" thru 3"

8511 / 8513

600 WOG, MSS SP-110, Solder, 8513 with Stainless Steel Ball & Stem 3/8" thru 3"

Full Port

8501H

600 WOG, MSS SP-110, Threaded With Hose, Cap and Chain 1/2" and 3/4"

8511H

600 WOG, MSS SP-110, Solder With Hose, Cap and Chain 1/2" and 3/4"

8501H P1 / 8503H P1

200 psig @ 250°F, MSS SP-110, Press X Hose, 8503H P1 with Stainless Steel Ball & Stem 1/2" and 3/4"



8301A



UP8501 P2-06



UP8501 P2-16

Options/Accessories

8301A/8303A / 8311A/8313A

UP8501/UP8503 / UP8511/UP8513

Insulator Handle with Memory

Stop (16)

Oval Handle (04)

Stainless Steel Handle (08)

Extension Handle with Memory

Stop (09)

Extension Handle (06)

Memory Stop (02)

Tee Handle (03)

Chain Lever (12)

Locking Handle (07)

continued

2-PIECE BRONZE

Full Port

8301A / 8303A

600 WOG 150 SWP, MSS SP-110, Threaded, 8303A with Stainless Steel Ball & Stem 1/4" thru 2"

8301A P2 / 8303A P2

200 psig @ 250°F, MSS SP-110, Press X Press, 8303A with Stainless Steel Ball & Stem 1/2" thru 2"

8311A / 8313A

600 WOG, 150 SWP, MSS SP-110, Solder, 8313A with Stainless Steel Ball & Stem 3/8" thru 2"

2-PIECE BRONZE LEAD-FREE BRONZE BALL VALVES FOR POTABLE WATER SERVICE



Standard Port

UP8501 / UP8503 *

600 WOG, MSS SP-110, Threaded, UP8503 with Stainless Steel Ball & Stem 1/4" thru 3"

UP8501 P2 / UP8503 P2 *

200 psig @ 250°F, MSS SP-110, Press X Press, UP8503 with Stainless Steel Ball and Stem 1/2" thru 3"

UP8511 / UP8513 *

600 WOG, MSS SP-110, Solder, UP8513 with Stainless Steel Ball & Stem 3/8" thru 3"



UP8501H



UP8301A P2-16



UP8311A

Options/Accessories

UP8501/UP8511

UP8301A/UP8303A

UP8311A/UP8313A

Insulator Handle with Memory Stop (16)

Oval Handle (04)

Stainless Steel Handle (08)

Extension Handle with Memory Stop (09)

Extension Handle (06)

Memory Stop (02)

Tee Handle (03)

Chain Lever (12)

Locking Handle (07)

continued 2-PIECE BRONZE LEAD-FREE BRONZE BALL VALVES FOR POTABLE WATER SERVICE



Full Port

UP8501H *

600 WOG, MSS SP-110, Threaded With Hose, Cap and Chain 1/2" and 3/4"

UP8511H *

600 WOG, Solder with Hose, Cap and Chain 1/2" and 3/4"

UP8301A / UP8303A *

600 WOG, MSS SP-110, Threaded, UP8303A with Stainless Steel Ball & Stem 1/4" thru 2"

UP8501H P1 *

200 psig @ 250°F, MSS SP-110, Press X Hose 1/2" and 3/4"

UP8301A P2 / UP8303A P2 *

200 psig @ 250°F, MSS SP-110, Press X Press, UP8303A with Stainless Steel Ball and Stem 1/2" thru 2"

UP8311A / UP8313A *

600 WOG, MSS SP-110, Solder, UP8313A with Stainless Steel Ball & Stem 3/8" thru 2"



8201



8901



BA-480S

Options/Accessories

8201/8211

Oval Handle (04)

Stainless Steel Handle (08)

Memory Stop (02)

Tee Handle (03)

Locking Handle (07)

Extension Handle (06)

8901/8911 / BA-480B/BA-490B

Insulator Handle with Memory Stop (16)

Oval Handle (04)

Stainless Steel Handle (08)

Extension Handle (06)

Memory Stop (02)

Tee Handle (03)

Locking Handle (07)

2-PIECE FORGED BRASS

Standard Port

8201

400 WOG, Threaded 1/4" thru 4"

8211

400 WOG, Solder 3/8" thru 3"

Full Port

8901

600 WOG (1/4" thru 3"), 400 WOG (4"), CSA/UL/FM/CGA Approved to 2", Threaded 1/4" thru 4"

8911

600 WOG (1/2" thru 3"), 400 WOG (4"), Heavy Pattern, Solder 1/2" thru 4"

BA-480B / BA-480S**

250 psig @ 250°F, (1/2" thru 2"), 200 psig @ 250°F (2 1/2" thru 3"), Press X Press, BA-480S with Stainless Steel Ball & Stem 1/2" thru 3"

BA-490B / BA-490S**

200 psig @ 250°F, Press X Threaded, BA-490S with Stainless Steel Ball & Stem 1/2" thru 2"

BA-480BH / BA-480SH**

250 psig @ 250°F, Press X Hose, BA-480SH with Stainless Steel Ball & Stem, 1/2" thru 3/4"

BA-481B**

200 psig @ 250°F, Press X Press, Extension Stem with Memory stop, 1/2" thru 3"

BA-491B**

200 psig @ 250°F, Press X Threaded, Extension stem with Memory Stop, 1/2" thru 2"

* Meets Senate law S3874. IAPMO tested and certified to NSF/ANSI 372 for "lead-free" compliance.

**Tested and Certified by IAPMO R & T to NSF/ANSI 61 and NSF/ANSI 372 for Lead Free Compliance.

BALL VALVES



UP8901



UPBA-480



UPBA-481B

Options/Accessories

UP8901/UP8911

UPBA-480B/UPBA-490B

Insulator Handle with Memory Stop (16)

Oval Handle (04)

Stainless Steel Handle (08)

Extension Handle (06)

Memory Stop (02)

Tee Handle (03)

Locking Handle (07)

2-PIECE LEAD-FREE FORGED BRASS BALL VALVES FOR POTABLE WATER SERVICE

Full Port

UP8901 *

600 WOG (1/4" thru 2") 400 WOG (2-1/2" thru 3") MSS SP-110, UL/CSA Rated to 2", Threaded 1/4" thru 3"

UP8911 *

600 WOG (1/2" thru 2") 400 WOG (2-1/2" thru 3"), MSS SP-110, Solder 1/2" thru 3"

UPBA-480B / UPBA-480S *

250 psig @ 250°F (1/2" thru 2"), 200 psig @ 250°F (2 1/2" thru 4"), MSS SP-110, Press X Press, UPBA-480S with Stainless Steel Ball and Stem 1/2" thru 4"

UPBA-480BH / UPBA-480SH *

250 psig @ 250°F, Press X Hose, BA-480SH with Stainless Steel Ball & Stem, 1/2" and 3/4"

UPBA-481B / UPBA-481S *

200 psig @ 250°F, MSS SP-110, Press X Press, Extension Stem With Memory Stop, UPBA-481S with Stainless Steel Ball and Stem 1/2" thru 3"

UPBA-490B / UPBA-490S *

200 psig @ 250°F, MSS SP-110, Press X Threaded, UPBA-490S with Stainless Steel Ball and Stem 1/2" thru 2"

UPBA-491B / UPBA-491S *

200 psig @ 250°F, MSS SP-110, Press X Threaded, Extension Stem With Memory Stop, UPBA-491S with Stainless Steel Ball and Stem 1/2" thru 2"



8111

2-PIECE BRASS CIRCULATOR-FLANGE

8100

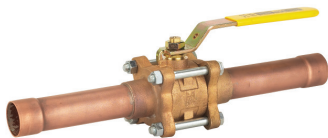
600 WOG, Full Port, Sold in Pkg. of 2, Threaded 3/4" thru 1-1/4"

8111

600 WOG, Full Port, Sold in Pkg. of 2, Solder 3/4" thru 1-1/4"



8604-16



8614-TE



UP8614

Options/Accessories

8604/8603 / 8614/8613

UP8604/UP8603 / UP8614/UP8613

Insulator Handle with Memory

Stop (16)

Oval Handle (04)

Stainless Steel Handle (08)

Extension Handle with Memory

Stop (09)

Extension Handle (06)

Memory Stop (02)

Tee Handle (03)

Chain Lever (12)

Locking Handle (07)

3-PIECE BRONZE BALL VALVES

Full Port

8604 / 8603

600 WOG, 150 SWP, MSS SP-110, Threaded, 8603 with Stainless Steel Ball & Stem 1/4" thru 3" *

8614 / 8613

600 WOG, 150 SWP, MSS SP-110, Solder, 8613 with Stainless Steel Ball and Stem 3/8" thru 3"

8604 P2 / 8603 P2

200 psig @ 250°F, MSS SP-110, Press X Press, 8603 P2 with Stainless Steel Ball and Stem 1/2" thru 2"

8614TE / 8613TE

600 WOG, 150 SWP, Solder, 8613TE with Stainless Steel Ball and Stem, Tube End 1/2" thru 2"

3-PIECE LEAD-FREE BRONZE BALL VALVES FOR POTABLE WATER

Full Port

UP8604 / UP8603 *

600 WOG, MSS SP-110, Threaded, UP8603 with Stainless Steel Ball & Stem 1/4" thru 3"

UP8614 / UP8613 *

600 WOG, MSS SP-110, Solder, UP8613 with Stainless Steel Ball & Stem 3/8" thru 3"

UP8604 P2 / UP8603 P2 *

200 psig @ 250°F, MSS SP-110, Press X Press, UP8603 P2 with Stainless Steel Ball & Stem 1/2" thru 2"



BA-260

2-PIECE, STAINLESS

Full Port

BA-260

1000 WOG, Stainless Steel Body and Ball, RPTFE Seats, Locking Handle, Threaded 1/4" thru 3"

* Meets Senate law S3874. IAPMO tested and certified to NSF/ANSI 372 for "lead-free" compliance.

BUTTERFLY VALVES



5211-03



5111-03



UPGG-245E



GG-SCS2

5000 SERIES – COMMERCIAL BUTTERFLY GROOVED SERIES

Concentric valve to MSS SP-67,
Available in lug or wafer body.
5000 Series IAPMO tested and
certified against NSF/ANSI 372
for lead-free* compliance.

Body: Cast Iron ASTM A126
Class B

Disc: AlBr (Aluminum Bronze)

Stem: 416 Stainless Steel

Liner: EPDM

2" thru 12" rated at 200 WOG

14" thru 48" rated at 150 WOG

These valves are based on our
6000 Series, but intended for
commercial applications in HVAC
and similar systems. The valves
feature a phenolic-backed rubber
seat with optimized disc and stem
design for reliable sealing, low
torque, and long life. Lug butterfly
valves 2" thru 12" are bi-directional
dead-end service to 200 psig max.
Valves 14" thru 24" are rated for
uni-directional dead-end service to
150 psig. The valves are available
with 10-position locking-lever
handles (up to 12 inch) and gear
operators.

UPGG-245E

Polyamide Coated Ductile Iron
Grooved End Butterfly, 300 psi,
designed to MS SP-67 Extended
Neck, Elastomer Encapsulated Disc
2" thru 10"

GG-SCS2

Nylon Coated Ductile Iron Grooved
End Butterfly, 300 psi,
UL/FM, Extended Neck, Elastomer
Encapsulated Disc
2 1/2" thru 10"



6111-03



6211-03



6211-02

6000 SERIES – INDUSTRIAL BUTTERFLY*

Concentric valve to MSS SP-67,
Available in lug or wafer body.

Disc: Ni-plated Ductile Iron, AlBr,
or Stainless Steel, nylon and
epoxy-coated optional.

Stem: 416 or 316 Stainless Steel.

Liner: EPDM, Buna, FDA

Neoprene, PTFE, Hypalon, Viton
and many other options.

Body: Cast iron ASTM A126

Class B or Ductile Iron ASTM

A536 65-45-12

2" thru 12" rated at 200 WOG

14" thru 48" rated at 150 WOG

These valves feature a
phenolic-backed rubber seat
with optimized disc and stem
design for reliable sealing,
low torque, and long life.

Lug butterfly valves 2" thru 12"
are bi-directional dead-end
service to 200 psig max. BUNA
and EPDM only. All others 150
psig uni-directional field
repairable. Valves 14" thru 24"
rated for uni-directional
dead-end service to 150 psig.
The valves are available with
on-board actuation direct from
the factory, 10 position locking
lever handles (up to 12 inch),
gear operators, or other
options – consult the factory.

- Available in Low Lead
6411-00/6411-01/6411-03
2" thru 12"
6411-00/6411-03
14" thru 24"

Options/Accessories
Rubber-Lined Butterfly
Electric Actuation
Pneumatic Actuation



6411-00/6411-01/6411-03
(PICTURED WITH BARE STEM)



5111-03



HPILCS WITH LEVER HANDLE

Options/Accessories
Rubber-Lined Butterfly
High Performance Butterfly
Electric Actuation
Pneumatic Actuation

LEAD-FREE COMMERCIAL BUTTERFLY



6411-00/6411-01/6411-03 *

Ductile Iron Body, Lug Style,
Aluminum Bronze Disc, EPDM
Liner, Bi-Directional Dead-End
Service 200 psig Max, IAPMO
Tested and certified against
NSF/ANSI 372 for "Lead-free"
compliance.
2" thru 12"

6411-00/6411-03 *

Ductile Iron Body, Lug Style,
Aluminum Bronze Disc, EPDM
Liner, Bi-Directional Dead-End
Service 200 psig Max 2" thru
12", Uni-Directional Dead-End
Service 150 psig Max,
14" thru 24", IAPMO Tested and
certified against NSF/ANSI 372
for "Lead-free" compliance.

5000 Series *

Cast Iron Body, Lug Style,
Aluminum Bronze Disc, EPDM
Liner, Bi-Directional Dead-End
Service 200 psig Max 2" thru
12", Uni-Directional Dead-End
Service 150 psig Max, 14" thru
24", IAPMO Tested and certified
against NSF/ANSI 372 for
"Lead-free" compliance.

HP SERIES HIGH PERFORMANCE BUTTERFLY

Double offset valve designed to
MSS SP-68, ASME B16.34, and
API 609, Category B. Available
in lug or wafer body, ANSI Class
150 and 300 in sizes 2-1/2" thru 36"
Body: A216 WCB carbon steel or
ASTM A351 CF8M
Stainless Steel



HPILCS WITH GEAR OPERATOR



HPILSS WITH GEAR OPERATOR

Options/Accessories
Rubber-Lined Butterfly
High Performance Butterfly
Electric Actuation
Pneumatic Actuation

continued HP SERIES HIGH PERFORMANCE BUTTERFLY

Disc: ASTM A351 CF8M
Stainless Steel
Stem: 17-4PH or 316
Stainless Steel

Seats: RTFE standard, Virgin
PTFE, UHMWPE and other options.
These valves feature a double
offset seat and disc design for
superior sealing with no leakage
and minimal seat contact and
wear. The valves are available with
on-board actuation direct from the
factory, 10 position locking lever
handles (up to 8 inch), gear
operators on all valves, for other
actuation options or accessories,
consult the factory.

HP1LSS4212/HP3LSS4212/
HP1LSS4213/HP3LSS4213

Stainless Steel Body, Lug Style,
Stainless Steel Disc, RPTE
Seat, bi-directional dead-end
service and double offset
design. ANSI Class 150 and 300
available in sizes 2 1/2" - 24".
Certified by IAPMO R&T to NSF/
ANSI 61 and NSF/ANSI 372 for
low lead requirements.

* Meets Senate law S3874. IAPMO tested and certified to NSF/ANSI 372 for "lead-free" compliance.



6000 SERIES BUTTERFLY VALVE
WITH PNEUMATIC ACTUATOR



HP SERIES LUG BUTTERFLY VALVE
WITH PNEUMATIC ACTUATOR

PNEUMATIC ACTUATION

Actuation Options

Double-Acting Actuators
Spring-Return Actuators
Solenoid Valves
Actuator Brackets
Limit Switches
Valve Positioners

BA-260 2-Piece Stainless Steel Ball Valves

Available on 1/4" thru 3" Valves.

Butterfly Valves

Available on HP Series
High-Performance Butterfly
Available in Wafer and
Lugged Patterns.
Available on 2" thru 48" Valves.
Available on Class 150 2-6"
thru 36".
Available on Class 300 2-1/2"
thru 36".
Available on 5000 and 6000
Series Butterfly Valves.
Available on Wafer and
Lugged Patterns.
Available on 2" thru 48".



BA-260 BALL VALVE WITH
ELECTRIC ACTUATOR



6000 SERIES BUTTERFLY VALVE WITH
ELECTRIC ACTUATOR



HP SERIES LUG BUTTERFLY VALVE WITH
ELECTRIC ACTUATOR

ELECTRIC ACTUATION

Actuation Options

120 Volt AC and DC Voltages
NEMA 4 and 7 Housings
4-20 maDC Valve Positioners
Actuator Brackets
Extra Limit Switches
Reversing Actuators

BA-260 2-Piece Stainless Steel Ball Valves

Available on 1/4" thru 3" Valves.

Butterfly Valves

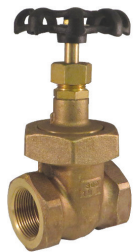
Available on HP Series
High-Performance
Butterfly Valves.
Available in Wafer and
Lugged Patterns.
Available on 2" thru 48" valves.
Available on Class 150 2-1/2"
thru 36".
Available on Class 300 2-1/2"
thru 36".
Available on 5000 and
6000 Series
Iron Butterfly Valves.
Available on Wafer and
Lugged Patterns.
Available on 2" to 48" valves.



IB645



IB647



IB656



UP667

BRONZE GATE VALVES, NON-RISING STEM

Threaded End

IB645

125 SWP-200 WOG, MSS SP-80, Threaded Bonnet
1/4" thru 4"

IB646

150 SWP-300 WOG, MSS SP-80, Threaded Bonnet
1/4" thru 4"

IB638

150 SWP-300 WOG, MSS SP-80, Union Bonnet
1/4" thru 2"

IB656

300 SWP-1000 WOG, Stainless-Steel Seats, MSS SP-80, Union Bonnet
1/4" thru 2"

UP645 *

UltraPure® Lead Free Bronze, Threaded, 300 WOG, MSS SP-80, Threaded Bonnet
1/4" thru 2"

UP667 *

UltraPure® Lead Free Brass, Threaded, 200 WOG, Threaded Bonnet
1/4" thru 2"

Solder End

IB647

125 SWP-200 WOG, MSS SP-80, Threaded Bonnet
3/8" thru 4"

UP647 *

UltraPure® Lead-Free Bronze, 300 WOG, MSS SP-80, Threaded Bonnet
3/8" thru 2"

UP668 *

UltraPure® Lead-Free Brass, Solder, 200 WOG, Threaded Bonnet
1/4" thru 2"



UP647



IB638 P2



UP645 P2



IB640

continued

BRONZE GATE VALVES, NON-RISING STEM

Press x
Press Ends



IB645 P2

200 psig @ 250°F, MSS SP-80, Threaded Bonnet
1/2" thru 2"

IB638 P2

200 psig @ 250°F, MSS SP-80, Union Bonnet
1/2" thru 2"

UP645 P2 *

UltraPure® Lead-Free Bronze, 200 psig @ 250°F, MSS SP-80, Threaded Bonnet
1/2" thru 2"

BRONZE GATE VALVES, RISING STEM

Threaded End

IB640

125 SWP-200 WOG, MSS SP-80, Threaded Bonnet
1/4" thru 4"

IB641

150 SWP-300 WOG, MSS SP-80, Threaded Bonnet
1/4" thru 4"

Press x
Press Ends



IB640 P2

125 SWP-200 psig @ 250°F, MSS SP-80, Threaded Bonnet
1/2" thru 2"

BRONZE VALVES



UP640



IB651



IB635

continued BRONZE GATE VALVES, RISING STEM

Threaded End

UP640 *

UltraPure® Lead-Free Bronze,
300 WOG, MSS SP-80,
Threaded Bonnet
1/4" thru 2"

IB617

125 SWP-200 WOG,
MSS SP-80, Union Bonnet
1/4" thru 3"

IB629

150 SWP-300 WOG, MSS SP-80,
Union Bonnet
1/4" thru 3"

IB650

200 SWP-400 WOG, Cu-Ni Seat
Ring, MSS SP-80, Union Bonnet
1/4" thru 2"

IB651

200 SWP-400 WOG, Stainless-
Steel Seat Ring, MSS SP-80,
Union Bonnet
1/4" thru 3"

IB652

300 SWP-1000 WOG, Cu-Ni Seat
Ring, MSS SP-80, Union Bonnet
1/4" thru 2"

IB654

300 SWP-1000 WOG,
Stainless-Steel Seat Ring,
MSS SP-80, Union Bonnet
1/4" thru 3"

Solder End

IB635

125 SWP-200 WOG, MSS SP-80,
Threaded Bonnet
3/8" thru 4"



IB648



UP635



UP640 P2

continued BRONZE GATE VALVES, RISING STEM

Solder End

IB648

150 SWP-300 WOG,
MSS SP-80, Union Bonnet
3/8" thru 3"

UP635 *

UltraPure® Lead-Free Bronze,
300 WOG, MSS SP-80,
Threaded Bonnet
3/8" thru 2"

Press x
Press Ends



IB640 P2

200 psig @ 250°F,
MSS SP-80, Threaded Bonnet
1/2" thru 2"

IB617 P2

200 psig @ 250°F,
MSS SP-80, Union Bonnet
1/2" thru 2"

UP640 P2 *

UltraPure® Lead-Free Bronze,
200 psig @ 250°F, MSS SP-80,
Threaded Bonnet
1/2" thru 2"



IB440



IB413T P2



IB444

BRONZE GLOBE VALVES

Threaded Ends

IB440

125 SWP-200 WOG, MSS SP-80, Bronze Disc, Threaded Bonnet 1/8" thru 3"

IB415

200 SWP-400 WOG, MSS SP-80, Needle Disc, Threaded Bonnet 1/8" thru 3/4"

IB413T

150 SWP-300 WOG, MSS SP-80, PTFE Disc, Union Bonnet 1/8" thru 3"

IB412

300 SWP-1000 WOG, MSS SP-80, Bronze Disc, Union Bonnet 1/4" thru 2"

IB434

200 SWP-400 WOG, MSS SP-80, SS Seat & Disc, Union Bonnet 1/4" thru 2"

IB444

300 SWP-1000 WOG, MSS SP-80, SS Seat & Disc, Union Bonnet 1/4" thru 2"

UP440 *

UltraPure® Lead-Free Bronze, 300 WOG, MSS SP-80, Bronze Disc, Threaded Bonnet 1/8" thru 2"

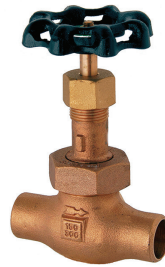
Solder Ends

IB418

125 SWP-200 WOG, MSS SP-80, Bronze Disc, Threaded Bonnet 3/8" thru 2"

IB423

150 SWP-300 WOG, MSS SP-80, PTFE Disc, Union Bonnet 1/2" thru 3"



IB423



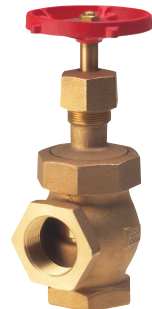
UP418



440 P2



IB463



IB454T

continued BRONZE GLOBE VALVES

Solder Ends

UP418 *

UltraPure® Lead-Free Bronze, 300 WOG, MSS SP-80, Bronze Disc, Threaded Bonnet 3/8" thru 2"

Press x Press Ends



IB440 P2

200 psig @ 250°F, MSS SP-80, Bronze Disc, Threaded Bonnet 1/2" thru 2"

IB413T P2

200 psig @ 250°F, MSS SP-80, PTFE Disc, Union Bonnet 1/2" thru 2"

UP502 P2 *

UltraPure® Lead-Free Bronze, 200 psig @ 250°F, MSS SP-80, Bronze Disc, Threaded Bonnet 1/2" thru 2"

BRONZE ANGLE VALVES

Threaded Ends

IB463

125 SWP-200 WOG, MSS SP-80, Bronze Disc, Threaded Bonnet 1/4" thru 2-1/2"

IB454T

150 SWP-300 WOG, MSS SP-80, PTFE Disc, Union Bonnet 1/4" thru 2"

BRONZE VALVES



IB940



UP967

BRONZE CHECK VALVES HORIZONTAL SWING CHECK

Threaded Ends

IB904

Bronze, 125 SWP-200 WOG, MSS SP-80, Brass Disc (1/4" - 1-1/2"), Bronze Disc (2" - 3")
1/4" thru 3"

IB946

Bronze, 125 SWP-200 WOG, MSS SP-80, PTFE Disc
1/4" thru 2"

IB946

Bronze, 150 SWP-300 WOG, MSS SP-80, PTFE Disc
1/4" thru 2"

UP904 *

UltraPure® Lead-Free Bronze, 300 WOG (1/4" thru 2"), 200 WOG (2-1/2" thru 3"), MSS SP-80, Bronze Disc, Threaded
1/4" thru 3"

UP967 *

UltraPure® Lead Free Brass, Brass Disc, 200 WOG
3/8" thru 3"



IB912



969



UP904 P2

BRONZE CHECK VALVES HORIZONTAL SWING CHECK

Solder Ends

IB912

Bronze, 125 SWP-200 WOG, MSS SP-80, Bronze Disc
3/8" thru 3"

IB945

Bronze, 150 SWP-300 WOG, MSS SP-80, PTFE Disc (Also available w/Bronze Disc)
1/2" thru 2"

UP912 *

UltraPure® Lead-Free Bronze, 300 WOG, MSS SP-80, Bronze Disc
3/8" thru 3"

UP968 *

UltraPure® Lead-Free Brass, 200 WOG, Brass Disc
3/8" thru 3"

Press x
Press Ends



IB904 P2

Bronze, 200 psig @ 250°F, MSS SP-80, Brass Disc
1/2" thru 2"

969

Brass, 200 psig @ 250°F, Brass Disc, Integral Seat
1/2" thru 2"

UP904 P2 *

UltraPure® Lead-Free Bronze, 200 psig @ 250°F, Brass Disc, MSS SP-80
1/2" thru 2"

UP969 *

UltraPure® Lead-Free Brass, Brass Disc, 200 psig @ 250°F
1/2" thru 2"



UP969



509Y



IB943 P2

HORIZONTAL SWING CHECK — Y PATTERN

Threaded Ends

IB949

Bronze, 300 SWP-600 WOG,
MSS SP-80, Bronze Disc
1/4" thru 3"

IB944

Bronze, 200 SWP-400 WOG,
MSS SP-80, Bronze Disc
1/4" thru 3"

Press x
Press Ends



509Y P2

Bronze, 200 psig @ 250°F, MSS
SP-80, Bronze Disc
1/2" thru 2"

SPRING-LOADED LIFT CHECK

Threaded Ends

IB943

Bronze, 250 WOG,
BUNA Disc
3/8" thru 2"

UP943 *

UltraPure® Lead-Free Bronze,
PTFE Disc, 250 WOG,
3/8" thru 2"

Press x
Press Ends



IB943 P2

Bronze, 200 psig @ 250°F,
Buna Disc
1/2" thru 2"

UP943 P2 *

UltraPure® Lead-Free Bronze,
200 psig @ 250°F, PTFE Disc,
1/2" thru 2"



IR1140-UL



IR1124-UL



118-FP

IRON GATE

IR1140-UL

OS & Y Bronze Trim, 175 WOG
UL/FM
2-1/2" thru 8"

IRON CHECK VALVE

IR1124-UL

175 WOG, UL/FM, Rubber Disc
2-1/2" thru 8"

BRONZE GATE VALVE WITH UL/FM TRIM

118-FP

OS & Y, UL/FM, NPT Threaded
1" thru 2"



1550



1560

CAST STEEL GATE

1550CB2

Class 150, Flanged, API 600, ASME B16.34 Design, API 598 Tested, Available in Butt-weld, Consult Factory. 2" thru 24"

3050CB2

Class 300, Flanged, API 600, ASME B16.34 Design, API 598 Tested, Available in Butt-weld, Consult Factory. 2" thru 24"

6050CB2

Class 600, Flanged, API 600, ASME B16.34 Design, API 598 Tested, Available in Butt-weld, Consult Factory. 2" thru 12"

CAST STEEL GLOBE

1560CB2

Class 150, Flanged, API 623, ASME B16.34 Design, API 598 Tested, Available in Butt-weld, Consult Factory. 2" thru 8"

3060CB2

Class 300, Flanged, API 623, ASME B16.34 Design, API 598 Tested, Available in Butt-Weld, Consult Factory. 2" thru 8"

6060CB2

Class 600, Flanged, API 623, ASME B16.34 Design, API 598 Tested, Available in Butt-Weld, Consult Factory. 2" thru 6"



1570

CAST STEEL CHECK

1570CB2

Class 150, Flanged, API 594, ASME B16.34 Design, API 598 Tested, Available in Butt-Weld, Consult Factory. 2" thru 12"

3070CB2

Class 300, Flanged, API 594, ASME B16.34 Design, API 598 Tested, Available in Butt-Weld, Consult Factory. 2" thru 12"

6070CB2

Class 600, Flanged, API 594, ASME B16.34 Design, API 598 Tested, Available in Butt-Weld, Consult Factory. 2" thru 12"



IR1138-HI



IR330-HI



IR330-HI



IR116

IRON GATE

IR1138 or IR1138-HI

125 SWP 200 WOG, Non-Rising Stem, IBBM, MSS SP-70
Available 2" thru 12"
HI Available 2" thru 24"

IR1144-HI

125 SWP 200 WOG, Non-Rising Stem, All Iron, MSS SP-70
Available 2" thru 24"

IR1140 or IR1140-HI

125 SWP 200 WOG, OS & Y, IBBM, MSS SP-70
Available 2" thru 12"
HI Available 2" thru 24"

IR1146-HI

125 SWP 200 WOG, OS & Y, All Iron, MSS SP-70
Available 2" thru 12"

UP2885A or UP 2885M

UltraPure Lead-Free Iron
125 SWP, 200 WOB, OSPY, All Iron, MSS-SPTD
A Available 2" thru 12"
M available 2" thru 12"

IR913-HI

3% Nickel Iron, OS & Y, Iron Body, SS Trim, MSS SP-70
Available 2" thru 12"

IR330 or IR330-HI

250 WSP 500 WOG, OS & Y, IBBM, MSS SP-70
Available 2" thru 12"
HI Available 2" thru 12"

IRON GLOBE

IR116 or IR116-HI

125 SWP 200 WOG, MSS SP-85
Available 2" thru 10"
HI Available 2" thru 10"

IR313 or IR313- HI

250 SWP 500 WOG, IBBM, MSS SP-85
Available 2-1/2" thru 6"



IR1124



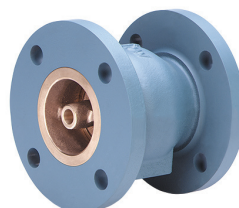
IR1124-LW



IR322



IR9253



IR9354

IRON CHECK

IR1124 or IR1124-HI

125 SWP 200 WOG, IBBM, MSS SP-71
Available 2" thru 12"
HI Available 2" thru 24"

IR1124-LW

125 SWP 200 WOG, IBBM, MSS SP-71, Lever and Weight, 2" thru 12"

IR1126-HI

125 SWP 200 WOG, All Iron, Available 2" thru 24"

UP2974A or UP2974M

UltraPure Lead-Free Iron
125 SWP 200 WOG, OSPY, All Iron, MSS-SP80
A Available 2" thru 12"
M Available 2" thru 12"

IR1937-HI

3% Nickel Iron, 125 SWP, 200 WOG Iron Body, Stainless-Steel Trim, MSS SP-71
2" thru 12"

IR322

250 SWP 500 WOG, IBBM, MSS SP-71
2-1/2" thru 6"

SILENT CHECK

IR9253

Class 125, Wafer-Style Cast-Iron Body, Stainless-Steel Disc, Stainless-Steel Spring, Meets Senate Law S3874
2" thru 10"

IR9354

Class 125, Globe-Style Cast-Iron Body, Stainless-Steel Disc, Stainless-Steel Spring, Meets Senate Law S3874
2-1/2" thru 42"

PLUMBING VALVES



967

BRASS SWING CHECK VALVE

967
200 WOG
Threaded Ends
Brass Disc
Sizes 1/2" thru 4"



943

968
200 WOG
Solder Ends
Brass Disc
Sizes 1/2" thru 2"



547

BRONZE SPRING LOADED LIFT CHECK

943
250 WOG
Threaded Ends
Buna Seat
Sizes 3/8" thru 2"

947
250 WOG
Solder Ends
Buna Seat
Sizes 3/8" thru 2"

WATER METER ANGLE GLOBE VALVES

547
Bronze Body with Drain
125 WOG
Flare Copper End X Threaded End
Buna Seat
Sizes: 3/4" X 3/4" - 1" X 1-3/4"
X 1/2" - 1" X 3/4"

548
Bronze Body
125 WOG
Flare Copper End X Threaded End
Buna Seat
Sizes: 3/4" X 3/4" - 1" X 1-3/4"
X 1/2" - 1" X 3/4"



38

CHROME-PLATED FROST-PROOF SILL COCKS

38
150 WWP
Male IPS X Hose End,
Combination Sweat X IPS
Buna Seat
4" thru 14"



445

58
150 WWP
Combination Sweat X Hose End,
Male IPS X Hose End
Buna Seat, Anti-Siphon Vacuum
Breaker
6" thru 14"

BRASS STOP VALVES

445
150 WWP
Threaded Ends
Buna-N Seat, Adjustable
Packing Nut
Sizes 1/2" & 3/4"

446
150 WWP
Solder Ends
Buna-N Seat, Adjustable
Packing Nut
Sizes 1/2" & 3/4"



545

DRAINABLE BRASS STOP VALVES

545

150 WWP
Threaded Ends
Buna-N Seat, Adjustable
Packing Nut
Sizes 1/2" & 3/4"



546

546

150 WWP
Solder Ends
Buna-N Seat, Adjustable
Packing Nut
Sizes 1/2" & 3/4"



710

549

150 WWP
Compression Ends
Buna-N Seat, Adjustable
Packing Nut
Sizes 1/2" & 3/4"

BRASS HOSE END VALVES

710

150 WWP
Male IPS X Hose End (1/2"
Combination Threaded
& Solder End)
Buna-N Seat, Adjustable
Packing Nut
Sizes 1/2" & 3/4"

712

150 WWP
Female IPS X Hose End
Buna-N Seat, Adjustable
Packing Nut
Sizes 1/2" & 3/4"

713

150 WWP
Solder X Hose End
Buna-N Seat, Adjustable
Packing Nut
Sizes 3/4"



1032



2002

continued BRASS HOSE END VALVES

1032

150 WWP
Female IPS X Hose End
Buna-N Seat, Adjustable
Packing Nut
Sizes 1/2" & 3/4"

1034

150 WWP
Solder X Hose End
Buna-N Seat, Adjustable
Packing Nut
Sizes 1/2" & 3/4"

2002

150 WWP
Male IPS X Hose End
(1/2" Combination Threaded
& Solder End)
Buna-N Seat, Adjustable
Packing Nut
T-Handle
Sizes 1/2" & 3/4"

BRASS BALL VALVE

2007

150 WWP
Male IPS X Hose End (1/2"
Combination Threaded
& Solder End)
Teflon® Seat, Adjustable
Packing Nut
T-Handle
Sizes 1/2" & 3/4"

PLUMBING VALVES



2004



875-01



876-01

NO-KINK BRASS BODY

2004

150 WWP
Male IPS X Hose End
Buna-N Seat, Adjustable
Packing Nut
T-Handle
Sizes 1/2" & 3/4"

2005

150 WWP
Female IPS X Hose End
Buna-N Seat, Adjustable
Packing Nut
T-Handle
Sizes 1/2" & 3/4"

BENT NOSE BRASS BODY

1035

150 WWP
Female IPS X Hose End
Buna-N Seat, Adjustable
Packing Nut
Sizes 1/2" & 3/4"

BRASS GAS VALVES CSA APPROVED

875-01

1/2 & 5 psig
Threaded Ends
Lever Handle
PTFE Seats, Chrome Plated Ball
Sizes 1/2" thru 1"

876-01

1/2 & 5 psig
Threaded Ends
T-Handle
PTFE Seats, Chrome Plated Ball
Sizes 1/2" & 3/4"



879-01



878-01

continued BRASS GAS VALVES CSA APPROVED

880

1/2 & 5 psig
Threaded Ends
Lever Handle
PTFE Seats, Chrome Plated Ball
Sizes 1/2" & 3/4"

879-01

1/2 & 5 psig
Female IPS X Flare
Lever Handle
PTFE Seats, Chrome Plated Ball
Sizes 3/8" X 3/8" - 1/2" - 1/2"

878-01

1/2 & 5 psig
Flare X Flare
Lever Handle
PTFE Seats, Chrome
Plated Ball
Sizes 3/8" X 3/8" - 1/2" - 1/2"



100-25



200



102

BRASS HEATING VALVES WITH HEAT RESISTANT HANDWHEEL

100-25

15 SWP - 60 psig Hot Water Rating
Female IPS X Male IPS Union End, EPDM Disc
Adjustable Packing Nut
Sizes 1/2" Thru 1-1/2"

200

Gravity Hot Water Rating
Female IPS X Male IPS Union End, EPDM Disc
Adjustable Packing Nut
Sizes 1/2" Thru 1-1/4"

101

Gravity Hot Water Rating
Female Sweat X Male IPS Union End, EPDM Disc
Adjustable Packing Nut
Sizes 1/2" & 3/4"

BRONZE HEATING GATE VALVE WITH HEAT RESISTANT HANDWHEEL

102

125 SWP - 200 WOG (to 353°)
Male Union X Female IPS
Screw-Over Bonnet, Non-Rising Stem
Adjustable Packing Nut, Solid Wedge
Sizes 1/2" Thru 1-1/4"

108

15 SWP - 60 psig Convactor
Steam Angle Rating
Female IPS X Female IPS Union End, EPDM Disc
Adjustable Packing Nut, Solid Wedge
Sizes 1/2" & 3/4"



8211-15



300

BRASS BALANCE/CIRCULATOR VALVES & ELBOWS

8211-15

400 WOG 2-Piece, Threaded Ends, Slotted Blow-Out-Proof Stem, Chrome-Plated Ball
PTFE Seats & Packing
1/2" thru 1"

300

Female IPS X Male IPS Union End
Sizes 1/2" Thru 1-1/4"

302

Female Solder X Male IPS Union End
Sizes 1/2" & 3/4"

BRONZE BALANCE/CIRCULATOR VALVES & ELBOWS

201

60 psig Hot Water Rating
Solder X Male Union
Blow-Out Proof Stem
PTFE Seats, Chrome Plated Ball
1/2" thru 1-1/2"



UP8501-16



UP8511H



UP8501H P1

Options/Accessories

UP8501/UP8503
UP8511/UP8513
UP8301A/UP8303A
UP8311A/UP8313A
Insulator Handle with Memory Stop (16)
Oval Handle (04)
Stainless Steel Handle (08)
Extension Handle with Memory Stop (09)
Extension Handle (06)
Memory Stop (02)
Tee Handle (03)
Chain Lever (12)
Locking Handle (07)

2-PIECE LEAD-FREE BRONZE BALL VALVES

Standard Port

UP8501 / UP8503 *

600 WOG, MSS SP-110, Threaded, UP8503 with Stainless Steel Ball & Stem
1/4" thru 3"

UP8511 / UP8513 *

600 WOG, MSS SP-110, Solder, UP8513 with Stainless Steel Ball & Stem
3/8" thru 3"

UP8501 P2 / UP8503 P2 *

200 psig @ 250°F, MSS SP-110, Press X Press, UP8503 P2 with Stainless Steel Ball and Stem
1/2" thru 3"

Full Port

UP8501H *

600 WOG, Threaded with Hose-End, Cap and Chain
1/2" and 3/4"

UP8511H *

600 WOG, Solder with Hose-End, Cap and Chain
1/2" and 3/4"

UP8301A / UP8303A *

600 WOG, MSS SP-110, Threaded, UP8303A with Stainless Steel Ball & Stem
1/4" thru 2"

UP8311A / UP8313A *

600 WOG, MSS SP-110, Solder, UP8313A with Stainless Steel Ball & Stem
3/8" thru 2"

UP8501H P1 *

200 psig @ 250°F, MSS SP-110, Press X Hose-End
1/2" and 3/4"



UP8301A P2-09



UP8901



UPBA-481BXH

Options/Accessories

UP8301A/UP8303A
Insulator Handle with Memory Stop (16)
Oval Handle (04)
Stainless Steel Handle (08)
Extension Handle with Memory Stop (09)
Extension Handle (06)
Memory Stop (02)
Tee Handle (03)
Chain Lever (12)
Locking Handle (07)

UP8901/UP8911

UPBA-480B/UPBA-490B
Insulator Handle with Memory Stop (16)
Oval Handle (04)
Stainless Steel Handle (08)
Extension Handle (06)
Memory Stop (02)
Tee Handle (03)
Locking Handle (07)

continued 2-PIECE LEAD-FREE BRONZE BALL VALVES

UP8301A P2 / UP8303A P2 *

200 psig @ 250°F, MSS SP-110, Press X Press, UP8303A P2 with Stainless Steel Ball and Stem
1/2" thru 2"

2-PIECE LEAD-FREE BRASS BALL VALVES*

UP8901 **

600 WOG (1/2" thru 2"), 400 WOG (2-1/2" thru 3"), MSS SP-110, UL/CSA Rated to 2", Threaded
1/4" thru 3"

UP8911 **

600 WOG (1/2" thru 2"), 400 WOG (2-1/2" thru 3"), MSS SP-110, Solder
1/2" thru 3"

Full Port

UPBA-480B / UPBA-480S **

200 psig @ 250°F, MSS SP-110, Press X Press, UPBA-480S with Stainless Steel Ball and Stem
1/2" thru 4"

UPBA-480SH **

200 psig @ 250°F, MSS SP-110, Press X Hose-End
1/2" thru 3/4"

UPBA-481B / UPBA-481S **

200 psig @ 250°F, MSS SP-110, Extension Stem With Memory Stop, Press X Press, UPBA-481S with Stainless Steel Ball and Stem
1/2" thru 3"



UPBA-490B



UPBA-491B



UP8614

Options/Accessories

UPBA-480B/UPBA-490B

Insulator Handle with Memory Stop (16)
Oval Handle (04)
Stainless Steel Handle (08)
Extension Handle (06)
Memory Stop (02)
Tee Handle (03)
Locking Handle (07)

UP8604/UP8603

UP8614/UP8613

Insulator Handle with Memory Stop (16)
Oval Handle (04)
Stainless Steel Handle (08)
Extension Handle with Memory Stop (09)
Extension Handle (06)
Memory Stop (02)
Tee Handle (03)
Chain Lever (12)
Locking Handle (07)

continued 2-PIECE LEAD-FREE BRASS BALL VALVES*



UPBA-490B / UPBA-490S **

200 psig @ 250°F, MSS SP-110,
Press X Threaded, UPBA-490S with
Stainless Steel Ball and Stem
1/2" thru 4"

UPBA-490SH **

200 psig @ 250°F, MSS SP-110,
Press X Hose
1/2" and 3/4"

UPBA-491B / UPBA-491S **

200 psig @ 250°F, MSS SP-110,
Extension Stem with Memory Stop,
Press X Threaded, UPBA-491S with
Stainless Steel Ball and Stem
1/2" thru 2"

3-PIECE LEAD-FREE BRONZE BALL VALVES



Full Port

UP8604 / UP8603 *

600 WOG, MSS SP-110, Threaded,
UP8603 with Stainless Steel
Ball & Stem
1/4" thru 3"

UP8614 / UP8613 *

600 WOG, MSS SP-110, Solder,
UP8613 with Stainless Steel
Ball & Stem
3/8" thru 3"

UP8604 P2 / UP8603 P2 *

200 psig @ 250°F, MSS SP-110,
Press X Press, UP8603 P2
with Stainless Steel Ball & Stem
1/2" thru 2"



UP645



UP645 P2



UP667

LEAD-FREE BRONZE GATE VALVES

Non-Rising Stem

UP645 *

300 WOG, MSS SP-80, Threaded
Bonnet, Threaded
1/4" thru 2"

UP647 *

300 WOG, MSS SP-80, Threaded
Bonnet, Solder
3/8" thru 2"

UP645 P2 *

200 psig @ 250°F, MSS SP-80,
Threaded Bonnet, Press X Press
1/2" thru 2"

Rising Stem

UP640 *

300 WOG, MSS SP-80, Threaded
Bonnet, Threaded
1/4" thru 2"

UP635 *

300 WOG, MSS SP-80, Threaded
Bonnet, Solder
1/2" thru 2"

UP640 P2 *

200 psig @ 250°F, MSS SP-80,
Threaded Bonnet, Press X Press
1/2" thru 2"

LEAD-FREE BRASS GATE VALVES

Non-Rising Stem

UP667 *

200 WOG, Threaded Bonnet,
Threaded
1/4" thru 2"

UP668 *

200 WOG, Threaded Bonnet,
Solder
1/2" thru 2"

* Meets Senate law S3874. IAPMO tested and certified to NSF/ANSI 372 for "lead-free" compliance.

**Tested and Certified by IAPMO R & T to NSF/ANSI 61 and NSF/ANSI 372 for Lead Free Compliance.



UP440 P2



UP418



UP904

LEAD-FREE BRONZE GLOBE VALVES



UP440 *

300 WOG, MSS SP-80, Threaded
Bonnet, Threaded
1/8" thru 2"

UP418 *

300 WOG, MSS SP-80, Threaded
Bonnet, Solder
3/8" thru 2"

UP440 P2 *

200 psig @ 250°F, Press X
Press, MSS SP-80, Threaded
Bonnet, Press X Press
1/2" thru 2"

LEAD-FREE BRONZE CHECK VALVES



Horizontal Swing Check

UP904 *

300 WOG, Bronze Disc,
MSS SP-80, Threaded
1/4" thru 3"

UP912 *

300 WOG, Bronze Disc,
MSS SP-80, Solder
3/8" thru 3"

UP904 P2 *

300 WOG, Bronze Disc,
MSS SP-80, Press X Press
1/2" thru 2"

UP967 *

Brass, 200 WOG, Brass Disc,
Threaded
3/8" thru 3"

UP968 *

Brass, 200 WOG, Brass Disc,
Solder
3/8" thru 3"



UP968



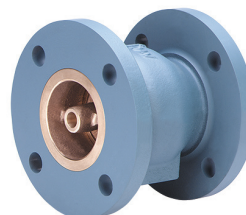
UP969



UP943P2



IR9253



IR9354

continued LEAD-FREE BRONZE CHECK VALVES



Horizontal Swing Check

UP969 *

Bronze, 200 psig @ 250°F,
Brass Disc, Press x Press
1/2" thru 2"

LEAD-FREE SPRING LOAD LIFT CHECK VALVES



UP943 *

PTFE Disc, 250 WOG,
Threaded
3/8" thru 2"

UP943 P2 *

200 psig @ 250°F, PTFE Disc,
Press X Press
1/2" thru 2"

SILENT CHECK



IR9253 *

Class 125, Wafer-Style Cast-Iron
Body, Stainless-Steel Disc,
Stainless-Steel Spring, Meets
Senate Law S3874
2" thru 10"
(Also Available Class 250)

IR9354 *

Class 125, Globe-Style Cast-Iron
Body, Stainless-Steel Disc,
Stainless-Steel Spring,
Meets Senate Law S3874
2-1/2" thru 42" (Also Available
Class 250)



6411-00/6411-01/6411-03
(PICTURED WITH LEVER HANDLE)



6411-03

Options/Accessories
Rubber-Lined Butterfly
Electric Actuation
Pneumatic Actuation

LEAD-FREE COMMERCIAL BUTTERFLY



6411-00/6411-01/6411-03 *

Cast Iron Body, Lug Style,
Aluminum Bronze Disc,
EPDM Liner, Bi-Directional
Dead-End Service 200 psig Max
IAPMO Tested And Certified
Against NSF/ANSI-372 For
"Lead-Free" Compliance.
2" thru 12"

6411-00/6411-03 *

Cast Iron Body, Lug Style,
Aluminum Bronze Disc,
EPDM Liner, Bi-Directional
Dead-End Service
200 psig Max 2" thru 12",
Uni-Directional Dead-End
Service 150 psig Max
IAPMO Tested And Certified
Against NSF/ANSI-372 For
"Lead-Free" Compliance.
14" thru 24"

5000 Series *

Cast Iron Body, Lug Style,
Aluminum Bronze Disc,
EPDM Liner, Bi-Directional
Dead-End Service 200 psig Max
2" thru 12", Uni-Directional
Dead-End Service 150 psig Max
IAPMO Tested And Certified
Against NSF/ANSI-372 For
"Lead-Free" Compliance.
14" thru 24"



HP1LSS WITH GEAR OPERATOR

LEAD-FREE HIGH PERFORMANCE BUTTERFLY



HP1LSS4212/HP3LSS4212/

HP1LLSS4213/HP3LSS4213

Stainless Steel Body, Lug Style,
Stainless Steel Disc, RPTE
Seat, bi-directional dead-end
service and double offset
design. ANSI Class 150 and 300
available in sizes 2 1/2" - 24".
Certified by IAPMO R&T to NSF/
ANSI 61 and NSF/ANSI 372 for
low lead requirements.

QUALITY IS MORE THAN WHAT MEETS THE EYE.

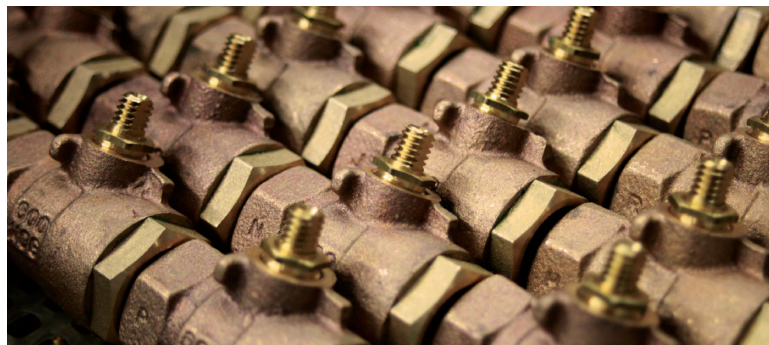
For the most part, engineering is invisible. Engineers or contractors know what a valve looks like, and knows what it does, but typically, they can't see the superiority designed into each and every Hammond Valve product. Hammond Valve demands excellence in our engineering department, with groups operating in each of our facilities to support the manufacturing of all products. These engineers provide design services as well, translating the critical specifications and processes into manufactured items – a key step where other suppliers, without our depth of experience, often fall flat.

Hammond Valve's well-staffed engineering department is supported by state-of-the-art computer tools, from 3D design using Solidworks, to finite element analysis (FEA) using COSMOS, to computational fluid dynamics (CFD) using CF Design software, to automated data acquisition in our laboratories using Labview. We operate our own fire-test facility to help us achieve and maintain the most advanced fire-safe designs to the latest API and other standards.



We translate our 3D designs directly to tool paths, both on our shop floor and in our pattern shop, which supports our in-house foundry operation. These capabilities also service our engineering and contracting customers, who use these models in their equipment and building designs.

In addition, Hammond Valve has extensive experience in the development of products for specific OEMs or demanding service conditions. Some are minor modifications to existing

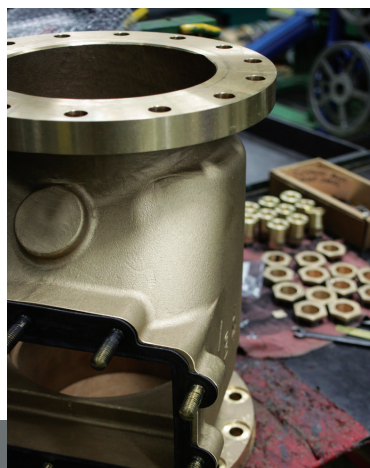


products. Others are turnkey product-development projects designed to meet the demanding safety needs or harsh application requirements of a specific user.

Hammond Valve's background in the Commercial and Plumbing markets should provide you with confidence to entrust your most difficult engineering applications to our experienced staff, helping you grow your business and providing you with the great service you deserve.

If you have a service that is constantly causing you concern, give us a call. Our application engineering and technical service teams stand ready to help.

For more information on our capabilities or assistance with a specific problem, contact your Hammond Valve sales representative (<http://www.HammondValve.com/index.php/rep>s). Their experience and industry knowledge will simplify finding a solution to your product and application requirements.



This condensed catalog is not a complete depiction of Hammond Valve's products or capabilities. Please contact the factory for special service conditions or additional accessories and options.

OUR BEST WORK IS [UNDERCOVER]

INSULATOR/MS®. YOUR HIDDEN LINE OF DEFENSE AGAINST CONDENSATION DAMAGE.

Standard insulation leaves a gap at valve sites that can lead to condensation, mildew and system contamination. So protect your installations with INSULATOR/MS® ball valve handles that cover exposed valve parts, close gaps and add a layer of insulating power.

INSULATOR also reduces service time. Its reliable memory stop adjusts with a few quick turns of a hex wrench, instead of needing disassembly. Specifying multiple projects is easy, too, with INSULATOR's versatile +15°F to +250°F operating range. The handles are tested and certified to UL 2043 and is UL listed for installation in air-handling plenums. Uncover more product info at MilwaukeeValve.com, HammondValve.com and UltraPureNoLeadValves.com.



MILWAUKEE VALVE



HAMMOND VALVE



Easy Field
Adjustment

THE INSULATOR/MS®
A Milwaukee/Hammond Valve Product

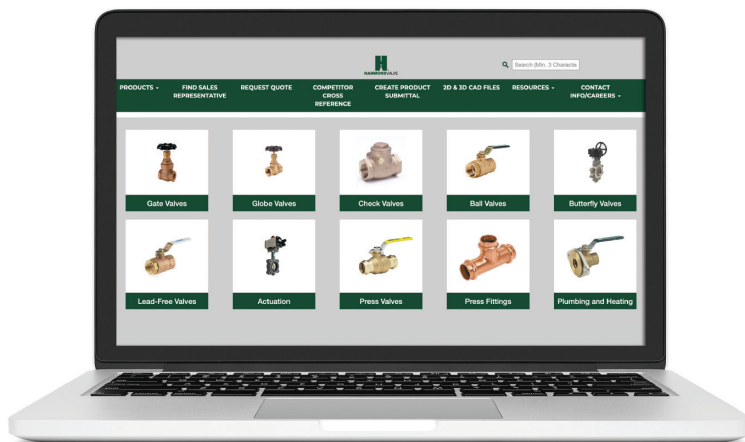
16550 West Stratton Drive, New Berlin, WI 53151
Phone 262-432-2700 | Fax 262-432-2701
www.MilwaukeeValve.com | www.HammondValve.com
www.UltraPureNoLeadValves.com

© 2019, Milwaukee Valve Company
INSULATOR/MS, UltraPure, Hammond Valve and Milwaukee Valve logos are
all registered trademarks of Milwaukee Valve Company.



WEBSITE REDUCES ERRORS AND SAVES TIME

Simplify your projects and reduce ordering errors by building your own valves, courtesy of Hammond Valve's online Advanced Search feature.



You know the service, and Hammond Valve has the valves and the options to solve your service issues. Found at www.HammondValve.com, the Advanced Search function acts as an online configurator, laying out all available options in one easy-to-use format. You select the type of valve you require, and choose the available materials, sizes, options, etc. Once all options are selected, you are given the model numbers for the valves that meet your criteria. When you know exactly what you are ordering, the result is fewer returns, lower shipping costs, and all-around time savings. The Advanced Search is especially beneficial in selecting Butterfly and Industrial valves, which both offer thousands of different valve and option combinations.

In addition, the website contains specification data for virtually every Hammond Valve product, and has the capacity to produce product submittals and is a repository for a wide variety of product information, including price lists, literature downloads, technical service bulletins, competitive cross reference and even provides links to YouTube instruction and installation videos.

And if you require assistance in selecting a valve, ball, seat, actuation or any of many other options, assistance is available from your Hammond Valve sales representative. Try it out at www.HammondValve.com.



16550 West Stratton Drive,
New Berlin, WI 53151
Phone 262-432-2700 • Fax 262-432-2701
www.HammondValve.com