

# 8100/8111\* 3/4"-1 1/4"

Brass Flange Ball Valve

Two Piece • Full Port

600 WOG

8100 Threaded Ends/8111 Solder Ends

Sold In Packages of 2

Kit Includes 4 Bolts & Nuts, Plus T-Handle (1)

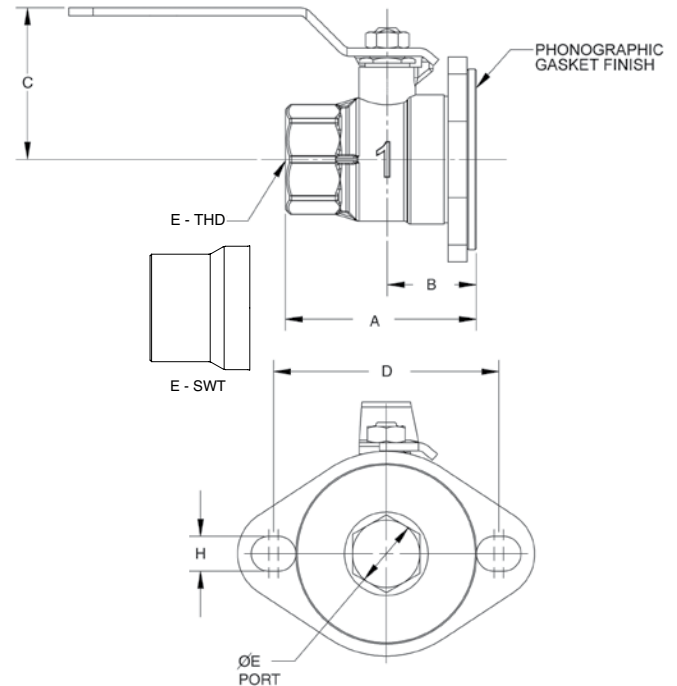
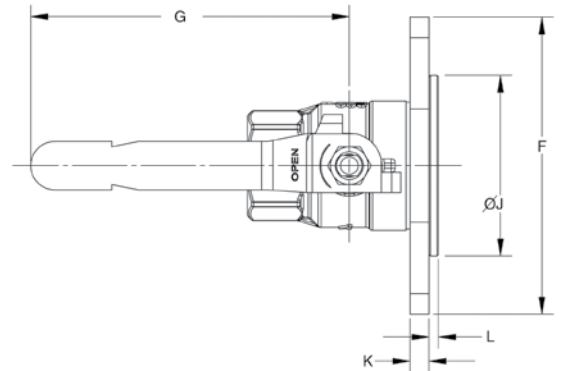
Blow-Out Proof Stem

MSS SP-110, ASME A112.4.14

## MATERIALS LIST

ITEM	PART	MATERIALS	ASTM SPEC.
1	Body	Brass, Forged	B283
2	Tailpiece	Brass, Forged	B283
3	Ball	Brass with Nickel chrome Plating	B283
4	Ball Seal	PTFE	Commercial
5	Stem	Brass	B124
6	O-Ring	Buna-N	D2006
7	Thrust Washer	PTFE	Commercial
8	Gland Nut	Brass	B124
9	Packing	PTFE	Commercial
10	Handle	Zinc Plated Steel	Commercial
11	Hand Grip	Zinc Plated Steel	Commercial

\*Not intended for use in potable water.



## DIMENSIONS

	UNITS	3/4" DN20	1" DN25	1-1/4" DN32
A O.V.L./THD	INCHES	2.50	2.81	2.99
	mm	64	71	76
A O.V.L./SWT	INCHES	2.69	3.13	3.38
	mm	68	80	86
B	INCHES	1.24	1.32	1.32
	mm	31	34	34
C	INCHES	1.95	2.12	2.31
	mm	50	54	59
D	INCHES	3.29	3.29	3.29
	mm	84	84	84
E PORT DIA.	INCHES	0.75	1.00	1.25
	mm	19	25	32
F FLANGE DIA.	INCHES	4.33	4.33	4.33
	mm	110	110	110
G	INCHES	4.72	4.72	4.72
	mm	120	120	120
H MTG. HOLE	INCHES	0.51	0.51	0.51
	mm	13	13	13
J	INCHES	2.67	2.67	2.67
	mm	68	68	68
K	INCHES	0.28	0.28	0.28
	mm	7	7	7
L	INCHES	0.14	0.14	0.14
	mm	4	4	4

The information presented on this sheet is correct at time of publication. Hammond Valve reserves the right to change design and/or materials without notice. For our Installation, Operation and Maintenance Manual and the most current product information go to [www.hammondvalve.com](http://www.hammondvalve.com). Hammond Valve is a registered trademark of Milwaukee Valve.

⚠ State of California Prop 65 **WARNING:** Cancer and Reproductive Harm. For more information visit [www.p65warnings.ca.gov](http://www.p65warnings.ca.gov).