

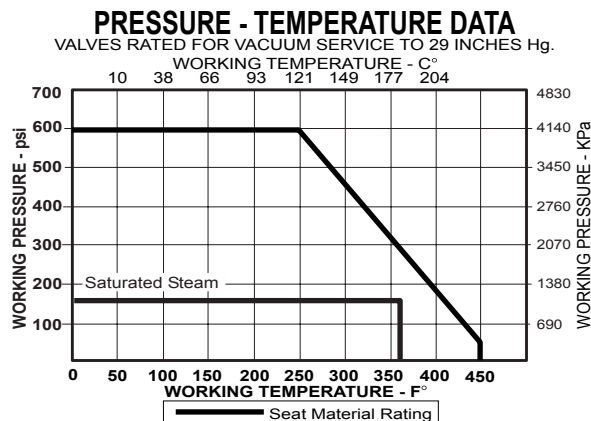
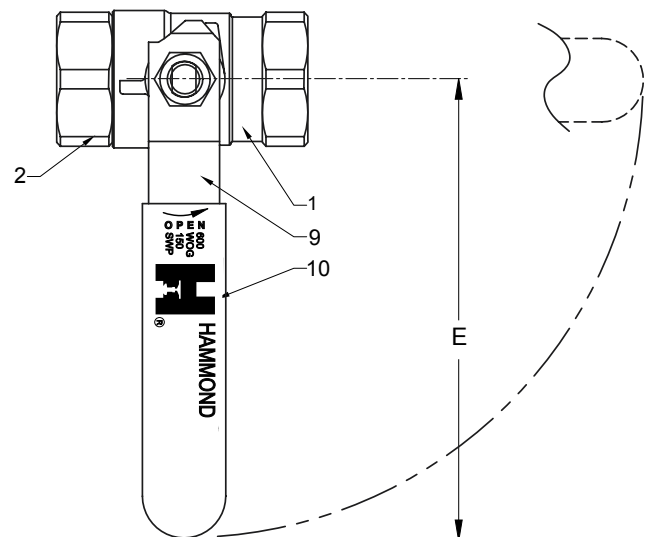
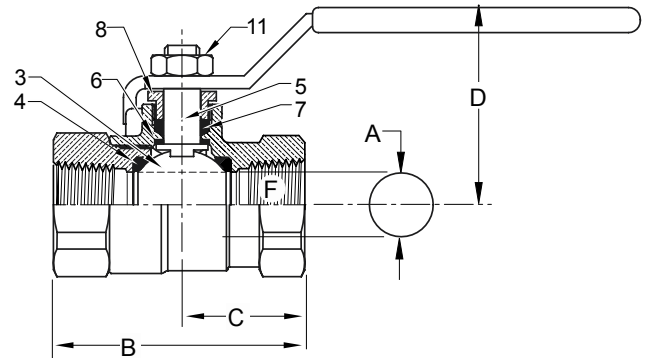
# 8301A/8303A\* 1/4"-2"

**Bronze Ball Valve  
Two Piece  
Full Port  
600 WOG/150 SWP (1)  
Threaded Ends  
Blow-Out Proof Stem  
MSS SP-110**

## MATERIALS LIST

| ITEM | PART          | MATERIALS                    | ASTM SPEC. |
|------|---------------|------------------------------|------------|
| 1    | Body          | Cast Bronze                  | B584       |
| 2    | Tailpiece     | Brass                        | B283       |
|      |               | Cast Bronze (1 1/4" & up)    | B584       |
| 3    | Ball          | Brass w/Hard Chrome Plating  | B16        |
|      |               | 316 Stainless Steel (B8303A) | A276       |
| 4    | Seat          | RPTFE, 15% Glass Filled      |            |
| 5    | Stem          | Brass                        | B16        |
|      |               | 316 Stainless Steel (8303A)  | A276       |
| 6    | Thrust Washer | RPTFE, 25% Glass Filled      |            |
| 7    | Packing       | PTFE                         |            |
| 8    | Packing Nut   | Brass                        | B16        |
| 9    | Handle        | Steel w/Zinc Plating         | Commercial |
| 10   | Hand Grip     | Vinyl                        |            |
| 11   | Handle Nut    | Steel w/Zinc Plating         | Commercial |

**\*Not intended for use in potable water.**



## DIMENSIONS

|            | UNITS       | 1/4"<br>DN10 | 3/8"<br>DN10 | 1/2"<br>DN15 | 3/4"<br>DN20 | 1"<br>DN25 | 1-1/4"<br>DN32 | 1-1/2"<br>DN40 | 2"<br>DN50 |
|------------|-------------|--------------|--------------|--------------|--------------|------------|----------------|----------------|------------|
| A<br>(DIA) | INCHES      | 0.38         | 0.38         | 0.50         | 0.76         | 1.06       | 1.31           | 1.56           | 2.00       |
|            | mm          | 10           | 10           | 13           | 19           | 27         | 33             | 40             | 51         |
| B          | INCHES      | 1.86         | 1.86         | 2.19         | 2.59         | 3.32       | 3.77           | 4.28           | 5.10       |
|            | mm          | 46           | 46           | 54           | 66           | 84         | 96             | 109            | 130        |
| C          | INCHES      | 1.00         | 1.00         | 1.10         | 1.30         | 1.59       | 1.81           | 2.06           | 2.37       |
|            | mm          | 25           | 25           | 27           | 33           | 40         | 46             | 52             | 60         |
| D          | INCHES      | 1.78         | 1.81         | 1.91         | 2.32         | 2.68       | 2.82           | 3.00           | 3.36       |
|            | mm          | 44           | 44           | 47           | 59           | 68         | 72             | 76             | 85         |
| E          | INCHES      | 3.82         | 3.82         | 3.82         | 4.55         | 6.33       | 6.33           | 6.33           | 7.19       |
|            | mm          | 94           | 94           | 94           | 116          | 161        | 161            | 161            | 183        |
| F          | THREAD SIZE | 1/4" NPT     | 3/8" NPT     | 1/2" NPT     | 3/4" NPT     | 1" NPT     | 1-1/4" NPT     | 1-1/2" NPT     | 2" NPT     |
| Cv         |             | 7            | 7            | 13           | 30           | 61         | 110            | 185            | 360        |

Note: DN (Diameter Nominal) = Metric equivalent size.

The information presented on this sheet is correct at time of publication. Hammond Valve reserves the right to change design and/or materials without notice. For our Installation, Operation and Maintenance Manual and the most current product information go to [www.hammondvalve.com](http://www.hammondvalve.com). Hammond Valve is a registered trademark of Milwaukee Valve.

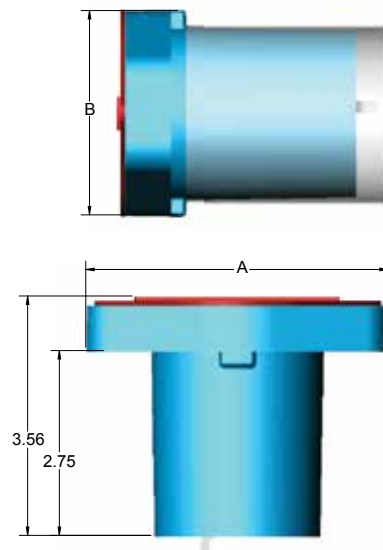
⚠ State of California Prop 65 **WARNING:** Cancer and Reproductive Harm. For more information visit [www.p65warnings.ca.gov](http://www.p65warnings.ca.gov).

# THE INSULATOR/MS®

## Bronze & Brass Ball Valves

Hammond Valve's insulated extension handle is designed to prevent condensation and other extraneous moisture from entering your insulated piping system, while also minimizing thermal energy loss from the system via metal extension tubes, levers, and similar parts.

Our handle design incorporates a unique memory stop feature that requires no disassembly or removal of the handle to engage and make adjustments.



### Bill of Material

| QTY. | DESCRIPTION          | MATERIAL           |
|------|----------------------|--------------------|
| 1    | HOUSING              | FIRE RESISTANT ABS |
| 1    | SLEEVE               | FIRE RESISTANT ABS |
| 1    | CAP                  | POLYETHYLENE       |
| 1    | INSULATION INSERT    | POLYSTYRENE        |
| 1    | SHIELD               | PLASTIC SLEEVE     |
| 1    | LOCK WASHER          | SS                 |
| 1    | STOP PLATE & SCREWS  | SS                 |
| 1    | MEMORY STOP ASSEMBLY | SS                 |

|                   | PART #     | SIZE(S)                | VALVE*                                 |
|-------------------|------------|------------------------|--|
| Small             | TIH-C1-940 | 1/4", 3/8", 1/2"       | 8901 / 8911 / BA-480B / BA-490B Series |
| A - 4.50          | TIH-D-940  | 1/4", 3/8", 1/2"       | 8501 / 8511 / 8301A / 8311A Series     |
|                   | TIH-D3-940 | 1/4", 3/8", 1/2"       | 8604 / 8603 / 8614 / 8613              |
|                   | TIH-F-940  | 1"                     | 8501 / 8511 Series                     |
|                   |            | 3/4"                   | 8501 / 8511 / 8301A / 8311A Series     |
|                   | TIH-F3-940 | 3/4"                   | 8604 / 8603 / 8614 / 8613              |
| B - 3.06          | TIH-H1-940 | 3/4",1",1 1/4", 1 1/2" | 8901 / 8911 / BA-480B / BA-490B Series |
| Large<br>A - 7.00 | TIH-J-940  | 2"                     | 8501 / 8511 Series                     |
|                   |            | 1 1/4", 1 1/2"         | 8501 / 8511 / 8301A / 8311A Series     |
| B - 3.44          |            | 1"                     | 8301A / 8311A Series                   |
|                   | TIH-J1-940 | 2"                     | 8901 / 8911 / BA-480B / BA-490B Series |
|                   | TIH-J3-940 | 1", 1 1/4", 1 1/2"     | 8604 / 8603 / 8614 / 8613              |
|                   | TIH-K-940  | 2"                     | 8301A / 8311A Series                   |
|                   | TIH-K3-940 | 2"                     | 8604 / 8603 / 8614 / 8613              |

To order factory assembled to the valve suffix 16

TIH handle is rated to 275°F. Installation of Solder end valves with the TIH installed: slide the plastic sleeve up to avoid contact with the valve body, wrap the TIH handle with a damp cloth to protect and draw heat away while directing the flame away from the center of the valve during heating.

\*Will fit our equivalent Ultrapure Low Lead Valves.

The information presented on this sheet is correct at time of publication. Hammond Valve reserves the right to change design and/or materials without notice. For our Installation, Operation and Maintenance Manual and the most current product information go to [www.hammondvalve.com](http://www.hammondvalve.com). Hammond Valve is a registered trademark of Milwaukee Valve.

⚠ State of California Prop 65 **WARNING:** Cancer and Reproductive Harm. For more information visit [www.p65warnings.ca.gov](http://www.p65warnings.ca.gov).