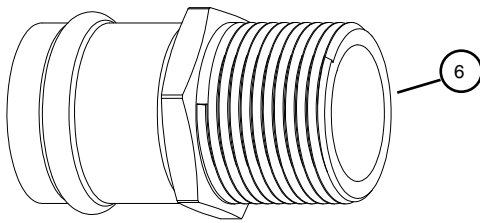
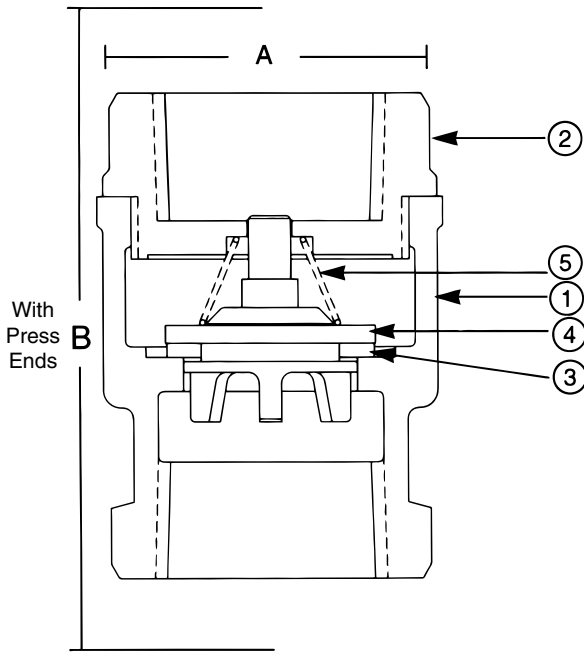


943 P2 1/2"-2"



Bronze Lift Check Valve
200 psig @ 250°F †
Spring Loaded • Press Ends



Press End Adapter (4151 Series)

Do not use for reciprocating air compressor service.

Note 1: Not intended for use in potable water.

Note 2: Check Valves may be installed in both the horizontal and vertical lines with upward flow or in any intermediate position.

MATERIAL LIST			
No.	PART	MATERIAL	SPECIFICATION
1	Body	Cast Bronze	ASTM B584, C84400
2	Tail Piece	Cast Bronze	ASTM B584, C84400
3	Disc	Buna	Commercial
4	Disc Holder	Cast Bronze	ASTM B584, C85700
5	Spring	Bronze	ASTM B103, C52100
6	Press Adapter	Brass Fitting W/EPDM O-Ring	ASTM C27450

DIMENSIONS - INCHES/MILLIMETERS						
Units	Size	STD Insertion Depth	A	B	Weight	C _v
Inches mm	1/2	0.87 22	1.22 31	4.22 107	0.44	4.1
Inches mm	3/4	0.98 166	1.50 38	5.08 129	0.57	7.6
Inches mm	1	0.98 166	1.91 48	5.91 150	0.89	13.0
Inches mm	1 1/4	1.02 26	2.16 55	6.23 158	1.28	23.0
Inches mm	1 1/2	1.42 36	2.59 66	7.07 180	1.72	31.0
Inches mm	2	1.58 40	3.13 79	9.13 232	2.58	54.0

The information presented on this sheet is correct at time of publication. Hammond Valve reserves the right to change design and/or materials without notice. For our Installation, Operation and Maintenance Manual and the most current product information go to www.hammondvalve.com. Hammond Valve is a registered trademark of Milwaukee Valve.

⚠ State of California Prop 65 **WARNING:** Cancer and Reproductive Harm. For more information visit www.p65warnings.ca.gov.