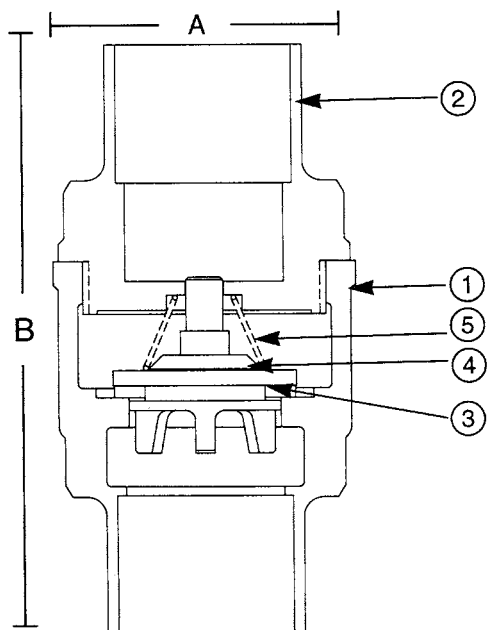


947 3/8"-2"

Bronze Lift Check Valve
250 WOG †
Spring Loaded • Solder Ends
Buna (B) or TFE (T)



Do not use for reciprocating air compressor service.

Note 1: Not intended for use in potable water.

Note 2: Check Valves may be installed in both the horizontal and vertical lines with upward flow or in any intermediate position.

MATERIAL LIST			
No.	PART	MATERIAL	SPECIFICATION
1	Body	Cast Bronze	ASTM B584, C84400
2	Tail Piece	Cast Bronze	ASTM B584, C84400
3	Disc	BUNA	
4	Disc Holder	Cast Bronze	ASTM B584, C85700
5	Spring	Bronze	ASTM B103, C52100

DIMENSIONS - INCHES/MILLIMETERS					
Units	Size	A	B	Weight	C _v
Inches mm	3/8	1.22 31	1.97 50	0.35	2.5
Inches mm	1/2	1.22 31	2.41 61	0.45	4.1
Inches mm	3/4	1.50 38	2.81 71	0.62	7.6
Inches mm	1	1.91 48	3.53 90	0.97	13.0
Inches mm	1 1/4	2.16 55	4.22 107	1.42	23.0
Inches mm	1 1/2	2.59 66	4.88 124	1.84	31.0
Inches mm	2	3.13 79	5.09 129	2.75	54.0

The information presented on this sheet is correct at time of publication. Hammond Valve reserves the right to change design and/or materials without notice. For our Installation, Operation and Maintenance Manual and the most current product information go to www.hammondvalve.com. Hammond Valve is a registered trademark of Milwaukee Valve.

⚠ State of California Prop 65 **WARNING:** Cancer and Reproductive Harm. For more information visit www.p65warnings.ca.gov.