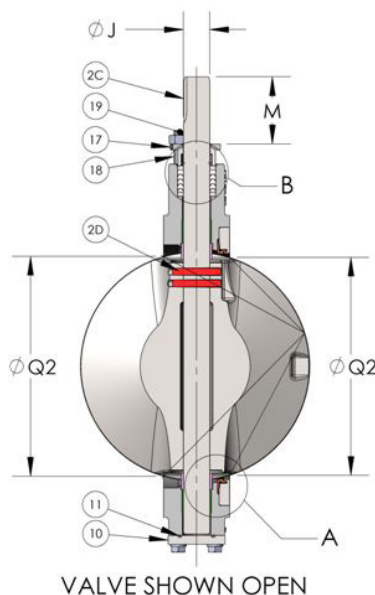
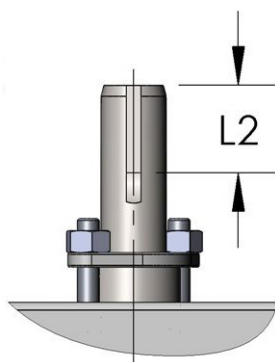


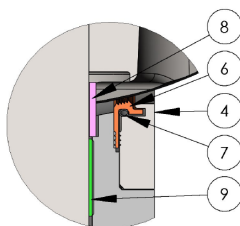
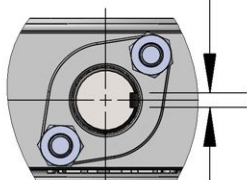
HP Series Wafer 10"- 18" with Gear Class 150 and 300



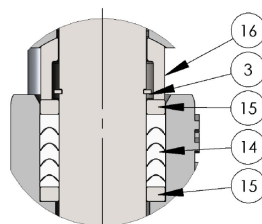
VALVE SHOWN OPEN



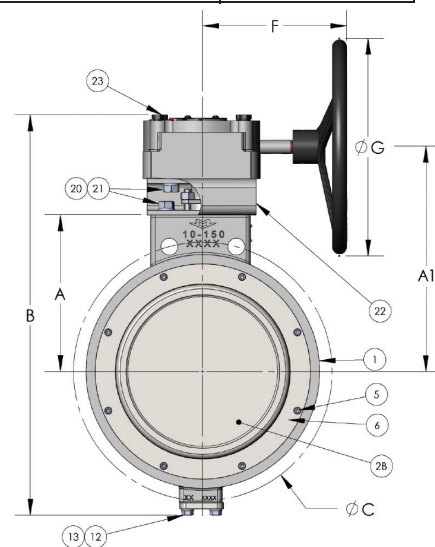
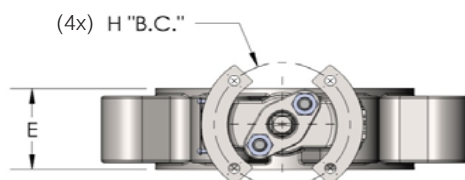
N



DETAIL A



DETAIL B



10" 150 WAFER SHOWN

10"-16" 150-300 AND 18" 150 WAFER WITH GEAR

10"-16" 150-300 AND 18" 150 WAFER WITH GEAR															
	VALVE DIMENSIONS						HANDWHEEL	TOP WORKS	STEM CONNECTION				CORE DIMS		Bolt Ø
VALVE SIZE	"A" HEIGHT	"A1" HEIGHT	"B" HEIGHT	"C" B.C	"E" FACE	"F"	"G" DIA	"H" B.C	"J" ØSTEM	"L2"	"M" LENGTH	"N"	ØQ1	ØQ2	
10"- 150 WAFER	8.34	14.29	22.06	14.25	2.81	7.93	12	4.11	1.12	1.50	3.72	0.25	9.30	9.38	1/2" - 13"
10"- 300 WAFER	10.81	16.86	28.40	15.25	3.25	7.85	12	4.37	1.37	1.50	5.51	0.31	9.16	9.25	1/2" - 13"
12"- 150 WAFER	11.62	17.67	29.27	17.00	3.19	7.85	12	4.37	1.37	1.50	5.51	0.31	10.36	10.48	1/2" - 13"
12"- 300 WAFER	11.59	17.64	31.18	17.75	3.63	8.36	12	4.92	1.50	1.50	5.92	0.38	10.25	10.34	1/2" - 13"
14"- 150 WAFER	12.00	18.36	31.74	18.75	3.63	8.36	12	4.92	1.50	1.50	5.50	0.38	11.68	11.76	1/2" - 13"
14"- 300 WAFER	13.50	19.61	35.12	20.25	4.63	10.96	20	6.27	2.00	2.38	6.02	0.50	11.39	11.49	1/2" - 13"
16"- 150 WAFER	14.00	20.11	35.96	21.25	4.00	10.96	20	6.27	2.00	2.38	6.02	0.50	13.65	13.72	1/2" - 13"
16"- 300 WAFER	15.00	21.09	38.12	22.50	5.25	11.95	20	6.27	2.25	2.38	6.02	0.50	13.26	13.33	1/2" - 13"
18"- 150 WAFER	15.00	21.09	37.74	22.75	4.50	11.95	20	6.27	2.25	2.38	6.02	0.50	15.63	15.71	1/2" - 13"

The information presented on this sheet is correct at time of publication. Milwaukee Valve reserves the right to change design and/or materials without notice. For our Installation, Operation and Maintenance Manual and the most current product information go to www.milwaukeevalve.com.

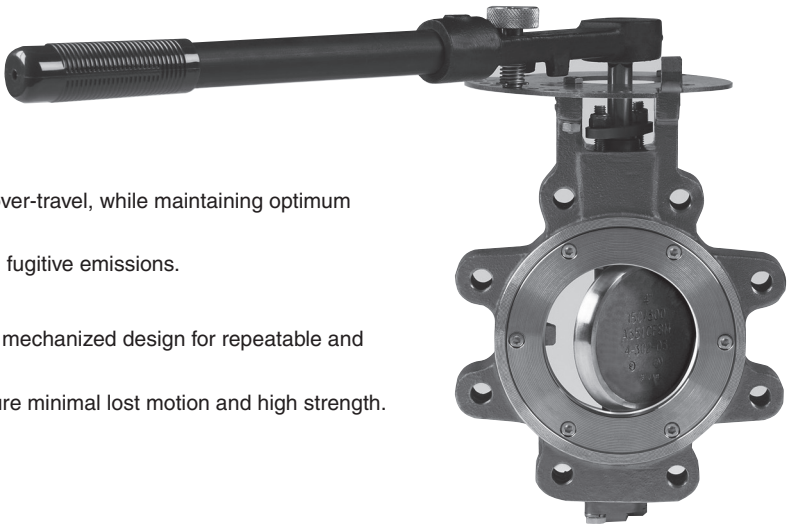
⚠ State of California Prop 65 **WARNING:** Cancer and Reproductive Harm. For more information visit www.p65warnings.ca.gov.



HP Series: Milwaukee Valve Company High Performance Butterfly Valves

Features and Benefits

- All valves offer bi-directional bubble-tight sealing at full rated pressure, with lug-bodied valves providing bi-directional dead-end service at full rated pressure.
- The double-offset design provides superior sealing with minimal seat contact and wear.
- The shaft and disc are manufactured as a single piece for maximum strength and Cv.
- The position stop on the disc is internally cast to prevent over-travel, while maintaining optimum disc/seat contact.
- The adjustable stem packing eliminates stem leakage and fugitive emissions.
- The blow-out-proof stem prevents injury and product loss.
- The seat is energized by a combination of pressure and a mechanized design for repeatable and reliable sealing and extended cycle life.
- The stem/disc connection uses a welded taper pin to ensure minimal lost motion and high strength.



H.P. Lug Pattern

Product Range

Sizes: 2-1/2" - 48" Class 150
Sizes: 2-1/2" - 24" Class 300
Body Configuration: Lug or Wafer

Operators Available

10 Position Lever Handle, Gear Operators, Pneumatic and Electric Actuators

Material of Standard Construction

Body Carbon Steel or CF8M 316 Stainless Steel
Disc CF8M 316 Stainless Steel
Stem 17-4 PH Stainless Steel
Bearing Stainless backed RTFE
Seat RTFE/Stainless Garter Spring

Specifications

Valve Sizes 2-1/2" through 24"
Flanged Ends Connections per ASME/ANSI B16.5 or B16.47 Series A (sizes 30" - 48").

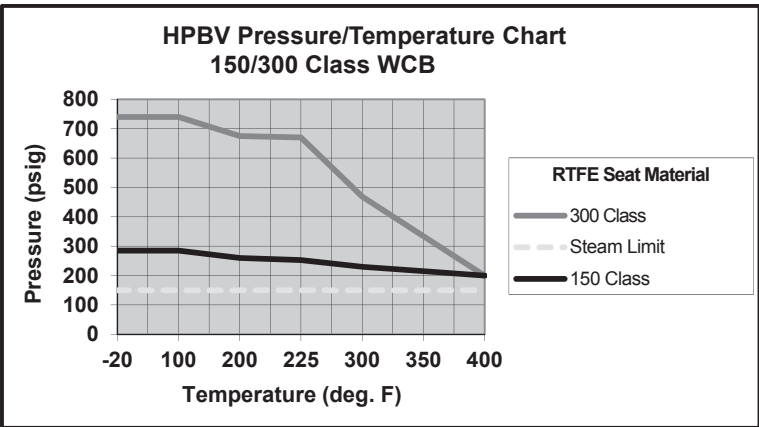
Valve face to face dimension per MSS-SP-68.

Valve bodies are cast high quality steel, with standard availability in ASTM-A216 WCB CS and ASTM A-351 CF8M SS. Body wall thickness meets ASME/ANSI B16.34 and complies with quality standard for steel castings MSS-SP-55.

High performance valve meets the requirements of MSS-SP-68 for double offset design.

Valve pressure tests meet MSS-SP-61.
Valve testing and inspection meet API 598.

Tagging meets the requirements of MSS-SP-25 and API 609B.



Pressure Ratings*
(Cold Working Pressure)

	2-1/2" through 48" Class 150	2-1/2" through 24" Class 300
Carbon Steel	285 psi	740 psi
Stainless Steel	275 psi	720 psi

*Valve is rated @ 150 PSI steam for on & off application and 50 PSI modulating service. (Limit Range 30°-70° - No Dwell In Near Closed Position.)

HOW TO ORDER MILWAUKEE VALVES HP SERIES HIGH PERFORMANCE BUTTERFLY VALVE										
SERIES	ANSI CLASS	BODY STYLE	BODY MATERIAL	DISC MATERIAL	STEM MATERIAL	SEAT MATERIAL	STEM PACKING	OPERATOR	EXT. OPTIONS	SIZE
XX	X	X	X	X	X	X	X	X	XX	XXX
HP	1-150 3-300	L-LUG W-WAFER	C-WCB S-CF8M	S-CF8M	4-17-4 SS 5-316 SS	1-PTFE 2-RPTFE 4-UHMWPE	1-PTFE G-GRAPHITE	1-BARE STEM 2-LEVER-LOCK 3-GEAR OP	S-Stainless Steel Seat Retainer U-Assembled in USA	025-240
PART NUMBER EXAMPLE										
HP1LCS4111 040 = 4 INCH, HIGH PERFORMANCE, CLASS 150, LUG PATTERN, CARBON STEEL BODY, 17-4 STEM, PTFE SEAT, PTFE PACKING, BARE STEM WITH NO EXT OPTIONS										

The information presented on this sheet is correct at time of publication. Milwaukee Valve reserves the right to change design and/or materials without notice. For our Installation, Operation and Maintenance Manual and the most current product information go to www.milwaukeevalve.com.

⚠ State of California Prop 65 **WARNING:** Cancer and Reproductive Harm. For more information visit www.p65warnings.ca.gov.

