



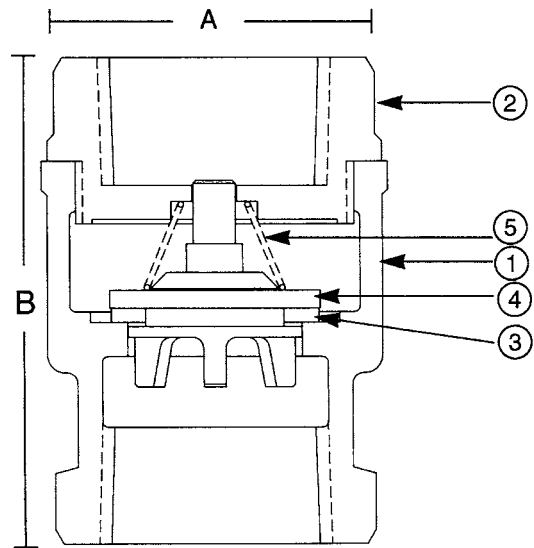
UP943 3/8"-2"



Bronze Lift Check Valve For Potable Water
250 psig WOG †
PTFE Disc
Spring Loaded • Threaded Ends

MATERIALS LIST

ITEM	PART	MATERIALS	ASTM SPEC.
1	Body	Cast Bronze	B584 C89833
2	Tail Piece	Cast Bronze	B584 C89833
3	Disc	PTFE	Commercial
4	Disc Holder	Cast Bronze	B584 C89833
5	Spring	Stainless Steel	A276 S30400



DIMENSIONS

Units	Size	A	B	Cv
INCHES	3/8	1.22	1.97	2.5
mm		31	50	
INCHES	1/2	1.22	2.09	4.1
mm		31	53	
INCHES	3/4	1.50	2.31	7.6
mm		38	59	
INCHES	1	1.91	2.66	13.0
mm		48	67	
INCHES	1 1/4	2.16	3.09	23.0
mm		55	79	
INCHES	1 1/2	2.59	3.31	31.0
mm		66	84	
INCHES	2	3.13	3.78	54.0
mm		79	96	

† Non-Shock

Note: Check Valves may be installed in both the horizontal and vertical lines with upward flow or in any intermediate position.

Note: Lead free refers to the wetted surface of the pipe, fittings and fixtures in potable water systems that have a weighted average lead content ≤0.25%. Source: California Health and Safety Code (116875).

The information presented on this sheet is correct at time of publication. Hammond Valve reserves the right to change design and/or materials without notice. For our Installation, Operation and Maintenance Manual and the most current product information go to www.hammondvalve.com. Hammond Valve is a registered trademark of Milwaukee Valve.

⚠ State of California Prop 65 **WARNING:** Cancer and Reproductive Harm. For more information visit www.p65warnings.ca.gov.