



Bronze Lift Check Valve For Potable Water
250 psig WOG †
PTFE Disc
Spring Loaded • Solder Ends

UP947 3/8"-2"



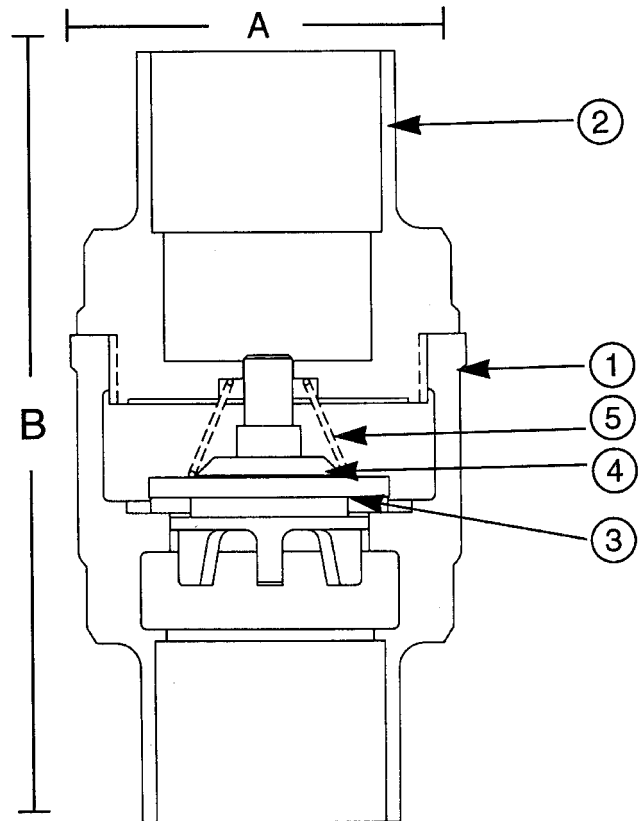
MATERIALS LIST

ITEM	PART	MATERIALS	ASTM SPEC.
1	Body	Cast Bronze	B584 C89833
2	Tail Piece	Cast Bronze	B584 C89833
3	Disc	PTFE	Commercial
4	Disc Holder	Cast Bronze	ASTM B584 C89833
5	Spring	Stainless Steel	A276 S30400

DIMENSIONS

Units	Size	A	B	Cv
INCHES	3/8	1.22	2.16	2.5
mm		31	55	
INCHES	1/2	1.22	2.41	4.1
mm		31	61	
INCHES	3/4	1.50	2.81	7.6
mm		38	71	
INCHES	1	1.91	3.53	13.0
mm		48	90	
INCHES	1 1/4	2.16	4.88	23.0
mm		55	124	
INCHES	1 1/2	2.59	4.22	31.0
mm		66	107	
INCHES	2	3.13	5.09	54.0
mm		79	129	

† Non-Shock



Note: Check Valves may be installed in both the horizontal and vertical lines with upward flow or in any intermediate position.

Note: Lead free refers to the wetted surface of the pipe, fittings and fixtures in potable water systems that have a weighted average lead content $\leq 0.25\%$. Source: California Health and Safety Code (116875).

The information presented on this sheet is correct at time of publication. Hammond Valve reserves the right to change design and/or materials without notice. For our Installation, Operation and Maintenance Manual and the most current product information go to www.hammondvalve.com. Hammond Valve is a registered trademark of Milwaukee Valve.

⚠ State of California Prop 65 **WARNING:** Cancer and Reproductive Harm. For more information visit www.p65warnings.ca.gov.

